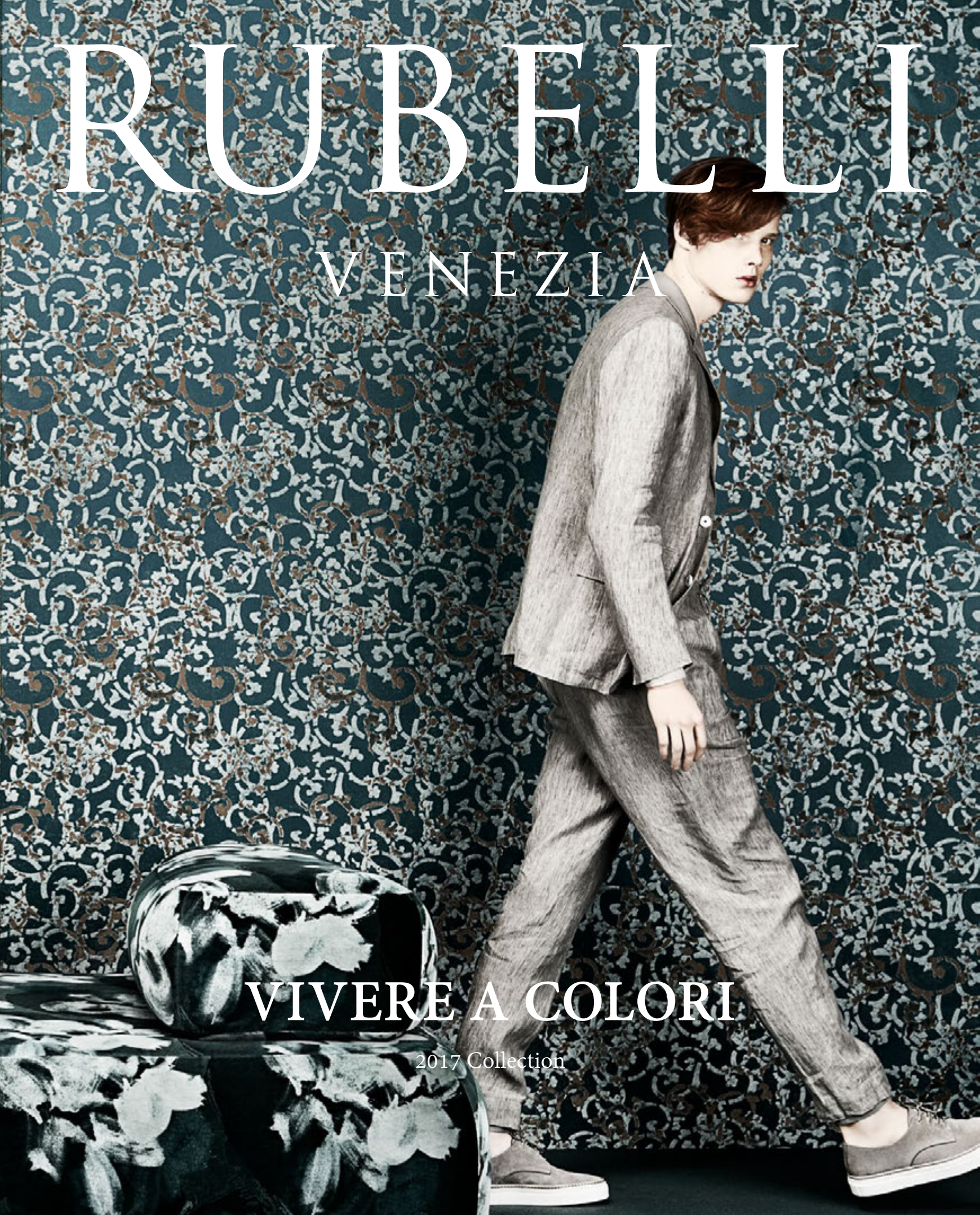


RUBELLI

VENEZIA

VIVERE A COLORI

2017 Collection







RUBELLI VENEZIA 2017



Quarantasette filzuoli di seta colorata: qui inizia la collezione 2017.

Un'ampia gamma di sfumature di neutri, rafforzata da colori intensi come la luce veneziana, e la novità: i bianchi con una punta di colore che aggiungono un tono di freschezza ed inventano i "nuovi neutri". Abbiamo sviluppato tutti i prodotti della collezione 2017 in una danza di armonie ed equilibri: variano lo stile, i materiali, le destinazioni d'uso, ma tutto è saldamente legato dall'armonia del colore. Ed è dunque facile giocare con tessuti e carte da parati per creare innumerevoli accostamenti e variazioni: scopritelo voi stessi, sperimentate e vedrete che funzionerà.

Ringrazio i capaci collaboratori che si sono dedicati con tanta passione a costruire questo armonioso mondo di colore e tutti voi che dimostrate di apprezzare il nostro lavoro.

Sfogliando le pagine di questo libro scoprirete quello che abbiamo creato per voi.

Forty-seven - "filzuoli" of coloured silk threads - mark the start of the 2017 collection.

A wide range of neutral shades reinforced by colours as intense as the light in Venice, with the new feature of whites with a touch of colour to add a tone of freshness and invent the "new neutrals". We have developed all products in the 2017 collection in a dance of harmonies and balance: the style, materials and performance may differ, yet everything is closely linked by the harmony of colour. It's therefore easy to "play" with fabrics and wallpaper to create countless matches and variations. Find out for yourselves, try it out and you'll see it works.

I would like to thank our excellent staff who has worked with so much passion on building this harmonious world of colour and all of you who show appreciation of our work.

Browse through the pages of this book to discover what we've created for you.

ARMONIA DELLA DIFFERENZA

Loredana Di Pascale

Nel 2016, come ogni anno, a partire dal mese di febbraio, filzuoli e mood-board hanno affollato progressivamente lo studio creativo di Rubelli.

Molti degli elementi raccolti erano frutto di esperienze vissute con Alberto Pezzato, direttore creativo della collezione e mio compagno di viaggi. Intriganti gli spunti che rimandavano in particolare a quanto visto a Parigi a una mostra di Anselm Kiefer e a una vernice di Oliviero Toscani. Due installazioni diversissime tra di loro: grandi libri, grandi quadri, grandi opere, da una parte; mini scatti, miniature e dettagli, dall'altra. Entrambe, comunque, interessantissime in quanto capaci, insieme, di toccare le corde più profonde del cuore. Indipendentemente dalle dimensioni delle opere esposte. Una suggestione provata nuovamente a Londra, pochi giorni dopo la trasferta in Francia, guardando due ragazzi fermi al binario di Gatwick: l'uno basso con i capelli neri, folti e ricci; l'altro alto e calvo. Sembravano usciti da un film comico ma non mi hanno suscitato ilarità bensì armonia. Bellezza.

Da queste emozioni è nata l'idea di parlare di con-

trasti intesi come differenze armoniche e non come conflitti. E per interpretare il concetto di armonia della diversità abbiamo coinvolto stylist, fotografi e designer. Insieme abbiamo individuato location tra loro diversissime: dall'iper contemporaneo resort Isola delle Rose di Matteo Thun al romantico hotel Borgonuovo a Chiaravalle fino alle Bolle Nardini disegnate da Massimiliano Fuksas. Insieme abbiamo vestito sedute e poltrone disegnate da maestri del Novecento con preziosi tessuti ispirati al Settecento. Insieme abbiamo fotografato ragazzi cinesi e africani perché il mondo è da vivere a colori. Insieme ci siamo lasciati avvolgere da un morbido cachemire ma anche intrigare da severi ritratti. Insieme abbiamo dato a Rubelli una verve pop con le istantanee di Giovanni Gastel.

Mai avrei potuto dire e nemmeno pensare che Rubelli, con i suoi 127 anni di storia, celasse addirittura questa componente pop. E la cosa, confesso, mi diverte.

Che l'armonia della differenza, al quale questo magazine è dedicato, ci possa far cogliere l'essenza della bellezza della diversità.

HARMONY OF DIFFERENCE

Loredana Di Pascale

In 2016, like every year, starting in February, fabric samples and mood boards gradually took over the Rubelli creative department.

Many of the elements collected were the result of experiences gained with Alberto Pezzato, creative director for the collection and my travelling companion. Intriguing inspirations referencing in particular what we'd seen in Paris at an Anselm Kiefer exhibition and at a vernissage by Oliviero Toscani. Two very different installations: on the one hand large books, large pictures, large works, on the other hand small photos, miniatures and details. Both in any case extremely interesting in that capable, together, of tugging at the very heartstrings. Irrespective of the size of the works on display. Inspiration found again in London, a few days after the trip to France, looking at two young men waiting on a platform at Gatwick, one short with thick and curly black hair, the other tall and bald. They looked like something out of a comedy film yet my impression was one of harmony and not hilarity. Beauty.

These sensations led to the idea of contrasts as

subject matter, understood as harmonious differences and not conflicts. To interpret the concept of the harmony of difference we involved stylists, photographers and designers. Together we pinpointed very different locations, from the ultra-contemporary resort Isola delle Rose of Matteo Thun to the romantic Hotel Borgonuovo at Chiaravalle and Le Bolle Nardini designed by Massimiliano Fuksas. Together we covered chairs and armchairs designed by twentieth-century masters with precious fabrics with an eighteenth-century inspiration. Together we photographed young Chinese and African people, as the world should be seen in colour. Together we allowed ourselves to be wrapped up in soft cashmere and also be intrigued by severe portraits. Together we gave Rubelli a pop vibe with snapshots by Giovanni Gastel.

I would never have said or even thought that Rubelli, with its history spanning 127 years, even kept this pop element hidden away. I have to confess that I found it amusing.

May the harmony of difference, to which this magazine is dedicated, allow us to capture the essence of the beauty of diversity.

CONTRIBUTORS

PIERO GEMELLI

– Architetto per studio e per passione. Fotografo per passione e per professione. Viaggiatore nella memoria, coniuga bellezza e rigore in foto di donne e la bellezza del rigore nelle foto di interior e architettura.

BEATRICE ROSSETTI

– Giornalista, interior designer, ama i colori, ama i contrasti. Disegna spazi da guardare e da abitare. Crea coesioni qualificanti tra stili diversi, dove nuove famiglie di oggetti arredano e raccontano mondi in cui vivere.

GIOVANNI GASTEL

– Uno dei più grandi fotografi al mondo. Nei suoi scatti, una moda elegante e da sogno, still-life ironici e ritratti capaci di catturare l'anima oltre lo sguardo. Ama scrivere poesie.

MICAELA SESSA

– Fashion editor per Elle e Elle Decor Italia. Consulente per molti marchi della moda. Laureata in architettura, ha una grande passione per l'arte e il design.

GIONATA XERRA

– Fotografo. Dopo gli studi di architettura inizia la sua collaborazione con le principali testate e aziende nel mondo del design e della moda. Parallelamente sviluppa un percorso di ricerca artistica partecipando a mostre nazionali e internazionali.

SIMONA SBORDONE

– Stylist. Napoletana di nascita, milanese di adozione. Amante dei paesaggi tropicali e delle grandi città, cura in modo maniacale tutti quei piccoli dettagli che fanno bella una foto. La sua grande passione? La danza classica.

STUDIO BLANCO

– Boutique agency che aiuta i marchi a comunicare nei mercati di alta gamma. Da settembre 2013, Studio Blanco si occupa dell'art direction del mensile Living, allegato al Corriere della Sera.

PIERO GEMELLI

– Architect by trade and passion. Photographer by passion and trade. A traveller through memory, combining beauty and rigour in photos of women and the beauty of rigour in the photos of interiors and architecture.

BEATRICE ROSSETTI

– Journalist and interior designer with a fondness for colours and contrasts. She designs spaces for looking and living. She creates salient cohesions between different styles, where new families of objects furnish and narrate worlds for living.

GIOVANNI GASTEL

– One of the most important photographers in the world. He captures elegant and dream-like fashion, ironic still-life images and portraits that reveal the soul behind the gaze. He likes writing poems.

MICAELA SESSA

– Fashion editor for Elle Italia and Elle Decor, consultant for various fashion brands. She has a degree in architecture and a passion for art and design.

GIONATA XERRA

– Photographer. After studying architecture he began working with major publications and firms in the world of design and fashion. At the same time he has pursued artistic exploration by taking part in national and international exhibitions.

SIMONA SBORDONE

– Stylist. Neapolitan by birth, Milanese by adoption. A fan of tropical landscapes and large cities, she is fanatical in her work about small details which to her mind make a great photo. Her great passion? Ballet.

STUDIO BLANCO

– It's a Boutique agency that helps brands flourish in the high end market. Since September 2013, the Studio is in charge of the art direction of Living, the lifestyle magazine of Corriere della Sera.

RUBELLI 2017 MAGAZINE
VIVERE A COLORI
Publisher: Rubelli S.p.A.

Project Editors
Loredana Di Pascale,
Alberto Pezzato

Production Manager
Roberta Linzi

Photographers
Giovanni Gastel, Piero Gemelli,
Gionata Xerra

Stylists
Beatrice Rossetti,
Simona Sbordone, Micaela Sessa

Writers
Mariagiovanna Cosentino,
Giovanni Gastel, Cristina Nardini,
Matteo Thun

Graphic Design
Studio Blanco

Translator
Mary Consonni

Thanks to
Alberto Levi Gallery, Arflex,
Busnelli, Camp Design Gallery,
Cappellini, Compasso, Driade,
Flexform, Flos, FontanaArte,
Fragile, Geppo, Kartell, laCividina,
Living Divani, Magis, Minotti,
MM Lampadari, Molteni,
Moroso, Nahoor, Poliform, Porro,
Prandina, Radar, Marcin Rusak,
Saba, Scenaperta, Servomuto,
Paolo Spalluto, Talenti, Tato
Design

Additional thanks to
Alberta Ferretti, Alberto Biani,
Church's, Emanuele e Andrea,
Ermengildo Zegna, Gabriela
Pires, Gentryportofino, Jedia,
Jimmy Choo, Norma Kamali,
Pomellato, Santoni, Tailor
Records, Urban

Special thanks to
JW Marriott Venice Resort & SPA
Distilleria Nardini



Digital version
of this catalogue:
r.rubelli.com/rub2017

Printing
Grafiche Antiga

INDICE

Editorial

4



Lo Chalet Incantato

12

Contributors

9



Colours

38



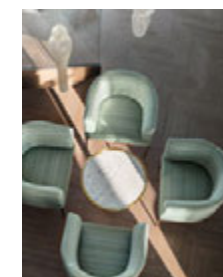
Bolle

28



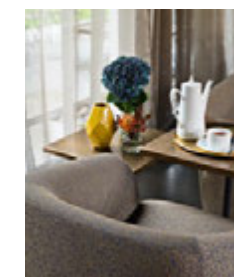
Ritratti

98



Isola delle Rose

66



Chiaravalle, Buen Retiro

82

Wallcovering Index

111

Textile Index

113

Patterns

128



RUBELLI

Chalet Celerina
St. Moritz

VENEZIA 2017

Lo Chalet



Incantato

Photo – Gionata Xerra
Concept and Styling – Simona Sbordone
Text – Mariagiovanna Cosentino



New York Suite sofa by Saba
Fifth Avenue 30205/2, cushions
Brahms 30158/2, 11



Se il lusso è...

... un luogo,
dove il tempo è attesa
il silenzio un valore
la luce soffusa
i colori avvolgenti

... uno spazio, vestito
di lane mélange
tessuti pelliccia
aristocratici velluti
impalpabili cachemire

... un angolo di mondo
che profuma di legna
che arde, frutta, zenzero,
cannella, aghi di pino

... un posto in cui rifugiarsi,
fermarsi, ritrovarsi.

Sì. Amo il lusso,
adoro il mio chalet.

Pouf and cushion Teddy 30219/1



VENEZIA 2017

New York Suite pouf by Saba
Fifth Avenue 30205/1



If luxury is...

... a place,
where time means
anticipation,
silence is valued,
the lighting suffused,
the colours enveloping

... a space, dressed
in mélange wool
fur fabrics
noble velvet
super-fine cashmere

... a corner of the world
scented with burning wood,
fruit, ginger, cinammon,
pine needles

... a place as a refuge for
standing still and finding
yourself.

Yes. I love luxury
and I adore my chalet.



Pillows and bedspread
Savile Row 30221/6,
plaid Harris 30220/6,
cushions Brahms 30158/15,
Teddy 30219/1

RUBELLI

On the left: **Teddy 30219/1**,
on the right: **Cleo chair** by
Talenti **Teddy 30219/1**,
sheer **Cuddle 30222/2**




On the left: Pila47 chair **Martora 30072/10** and **Zirma 30024/7**,
on the right: wallcovering **Metropolis Wall 23027/3**





Marlon chair by Poliform
Harris 30220/6, cushion Brahm
30158/17, sheer Cuddle 30222/2



BOLLE

L'idea
del progetto "Le Bolle",
fortemente voluto da mio padre, è nata
per celebrare il 225° anno della nostra Distilleria.

Commissionato all'architetto Massimiliano Fuksas, è una vera e propria opera di Landscape Design immersa nel verde del parco aziendale, dove si possono osservare tre differenti moduli che compongono la futuristica installazione architettonica: due bolle ellissoidali trasparenti accolgono il centro di ricerca della distilleria di famiglia in cui operano i nostri maestri artigiani, mentre un altro "mondo sommerso", scolpito nel terreno come un canyon naturale, ospita un auditorium di 100 posti a sedere destinato ad eventi e vernissage. Una volta conclusi i lavori, ricordo che ci siamo soffermati ad osservare le Bolle, rendendoci subito conto di quanto questa architettura si sposasse bene con la realtà circostante. Un'opera di grande impatto, moderna e futurista, ma allo stesso tempo sinuosa ed in perfetta armonia con il contrastante paesaggio naturale e rigoglioso della nostra terra. Una fusione perfetta, emblema della sinergia tra tradizione e innovazione. Con questo capolavoro d'artista la famiglia Nardini vuole raccontare l'amore dell'Azienda per il territorio di Bassano del Grappa, un'area ricca di valori, qualità e passione. Le Bolle sono un luogo unico, creato per divulgare la cultura della grappa e consolidare sempre di più il nostro legame con il territorio. Un luogo speciale, da condividere con visitatori e appassionati.

– Cristina Nardini

Photo – Gionata Xerra
Concept and Styling – Simona Sbordone





Rift chair by Moroso and
sofa Vermeer 30203/13



Massimiliano Fuksas sketch

The idea for the Le Bolle (“bubbles”) project, one of my father’s greatest dreams, was thought up to celebrate our distillery’s 225th anniversary.

Commissioned from the architect Massimiliano Fuksas, this is an actual landscape design work surrounded by the greenery of the company grounds. Three different modules can be seen which make up the futuristic architectural installation, with two transparent oval “bubbles” that house the research centre of the family distillery in which our master craftsmen work, while another “submerged world”, sculpted in the land like a natural canyon, houses an auditorium with capacity for 100 and intended for vernissages and other events.

I remember that, once the works had been completed, we stopped to take a look at Le Bolle, immediately

aware of how well this architecture matches its surroundings. A modern and futuristic work of great impact, yet at the same time sleek and blending perfectly with the contrasting natural and luxuriant landscape of our region. A perfect fusion, a symbol of the synergy between tradition and innovation.

Through this artist’s masterpiece the Nardini family set out to tell of the company’s affection for the area of Bassano del Grappa, an area rich in values, quality and passion.

Le Bolle is a unique place, created to spread the culture of grappa and increasingly strengthen our links with the area. A special place, to be shared with visitors and enthusiasts.

– Cristina Nardini



Boccioni 30215/3

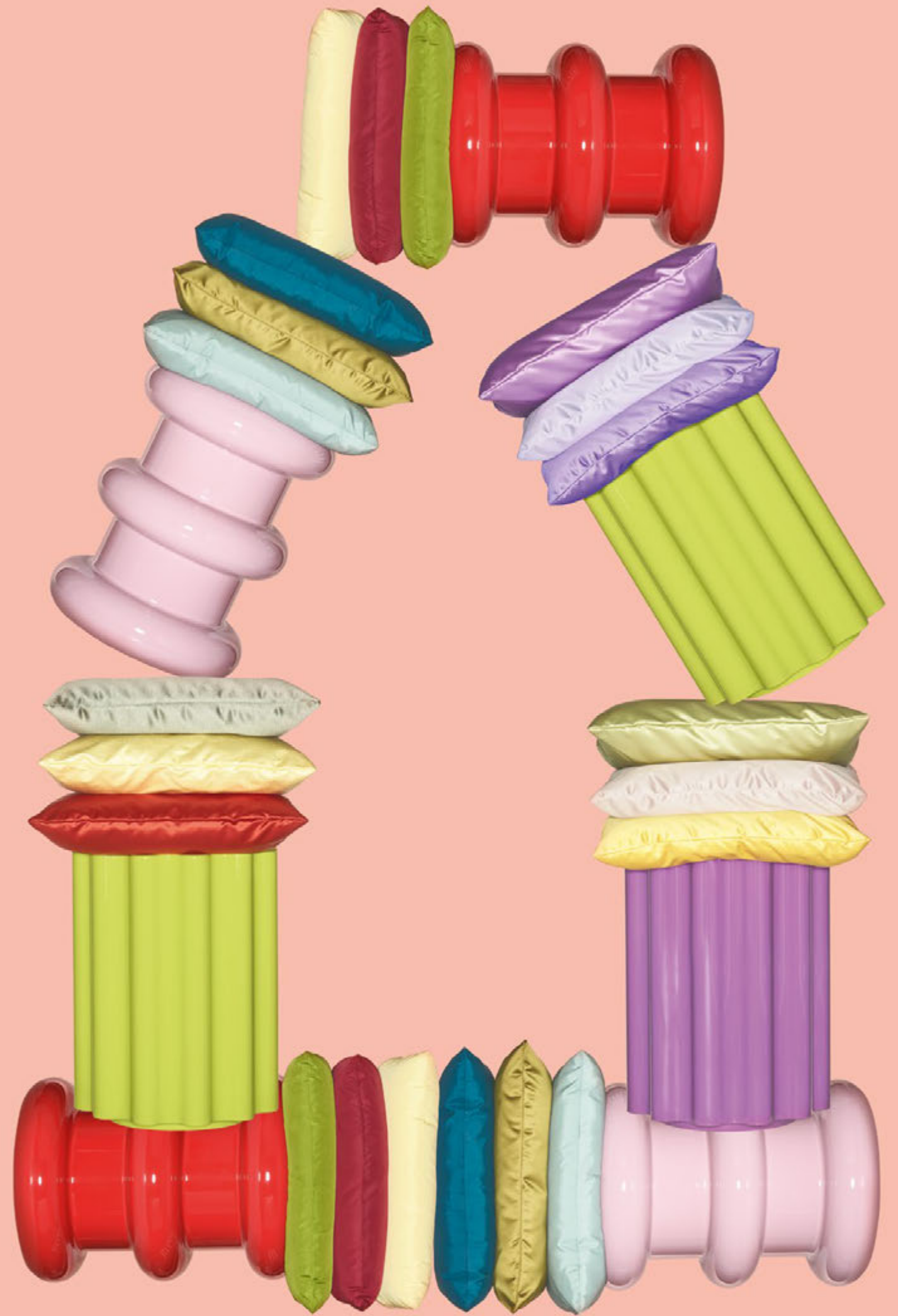
RUBELLI

VENEZIA 2017

COL -

Photo - Giovanni Gastel
Concept and Styling - Micaela Sessa
Assisted by - Nicolò Milella

OURS



Tent Roi Soleil 30212/1, Cordoba
30200/1, Mercurio 30202/2,
cushions Katagami, Shogun and
Vermeer



On the left: Dalia chair by
Cappellini Cordoba 30200/6,
on the right: Giuditta 30207/1



Shibori Wall 23026/1,
Squerarol Bench by Rubelli Casa
Sanandaj 30201/2



Botolo chair by Arflex
Marie Antoinette 30209/3



Se lo splendore
di questo tessuto
fosse lo specchio
della tua anima
amore
ora potrei illuminarmi
della tua luce argentata.

— Giovanni Gastel
Milano 2016

Were the brilliance
of this fabric
the mirror
of your soul,
my love,
I would be lit
by your silvery light

Dress designed by Jeija,
Vasarely 30217/5



Jeans designed by Tailor Records,
Cordoba 30200/9



On the left: Grand Eaton chair by
Donghia Roi Soleil 30212/5,
on the right: tights Salomè
30206/2, Santoni | Rubelli shoes
Marie Antoinette 30209/2



On the left: Sanandaj 30201/5,
on the right: Katagami 30223/10,
Bubble Rock Sofa by Living Divani
Mrs Robinson 30213/5



On the left : Glove up chair by
Molteni Figaro 30210/1



Dogaressa bed by Rubelli Casa
Metropolis 30216/3,
bedspread Taidai 30214/6



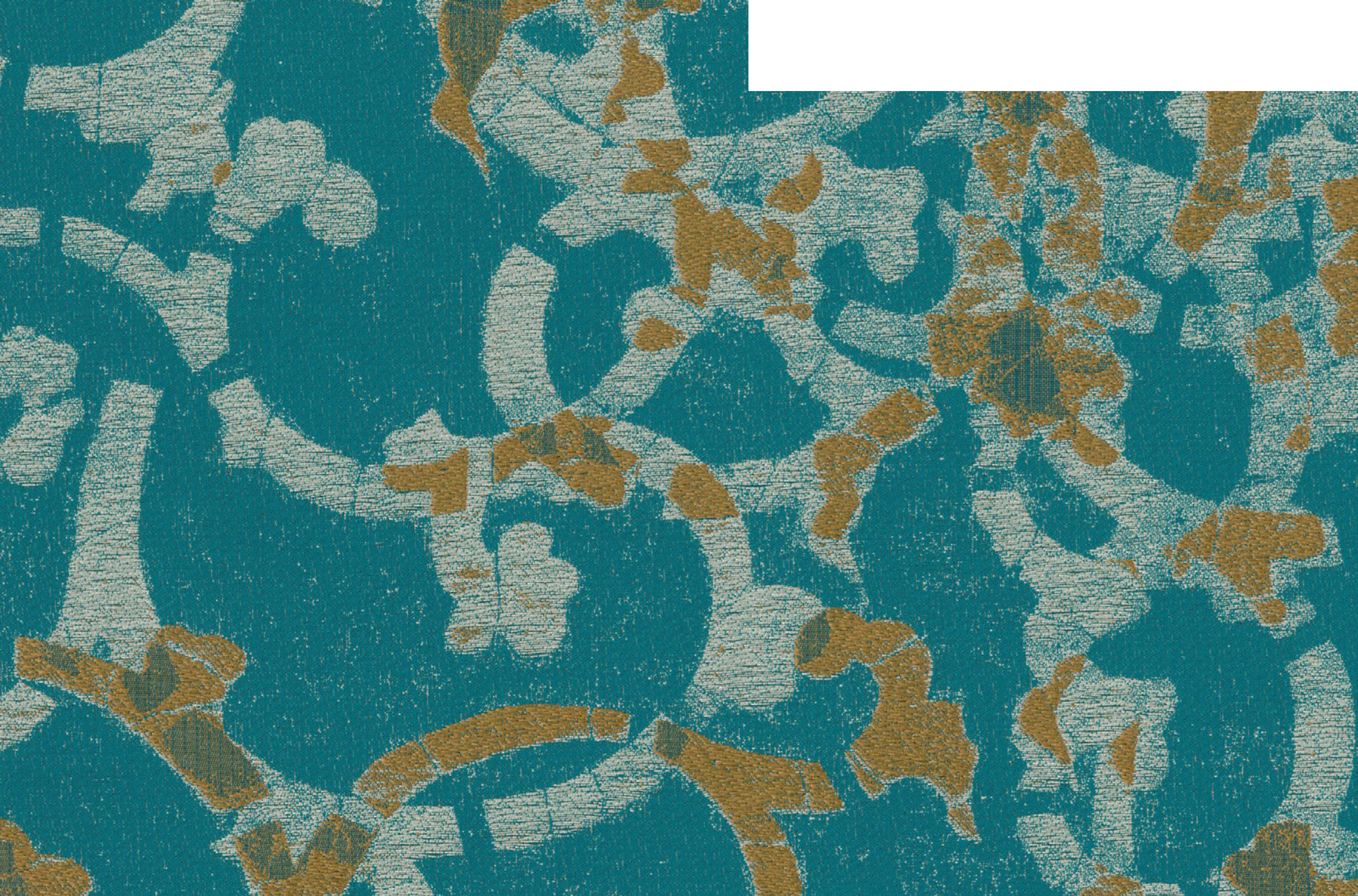


On the left: Servomuto lighting
**Katagami, Cordoba,
Vermeer and Shogun**
on the right: Sof Sof chair by
Driade Dauphin 30211/3



On the wall Tatami 30224/8
and Mrs Robinson 30213/6,
Shadowy chair by Moroso,
cushion Katagami 30223/8,
Carpet by Rubelli





JW Marriot Venice Resort & SPA
Isole delle Rose, Venezia

ISOLA DELLE ROSE



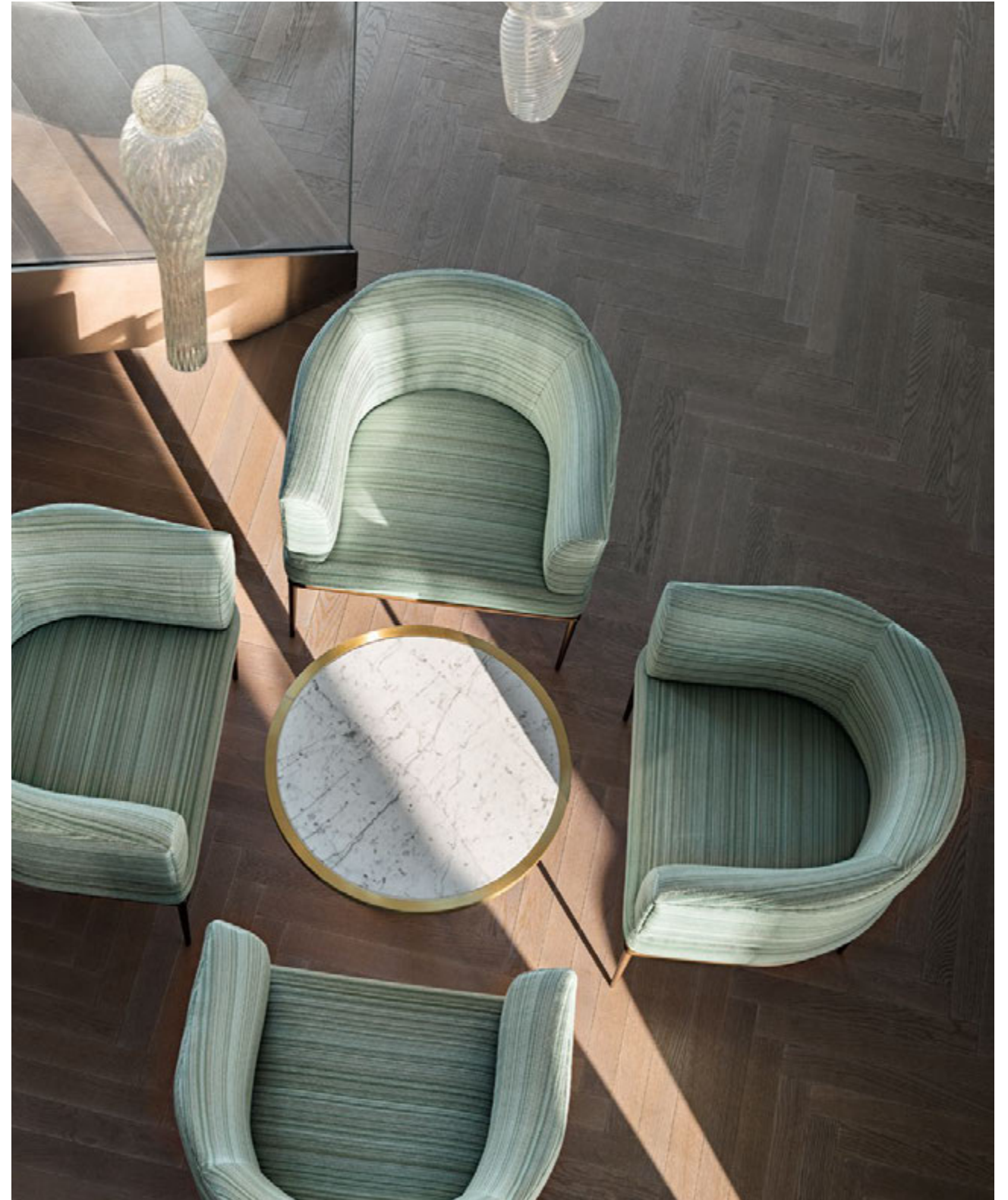
Photo – Gionata Xerra
Concept & Styling – Simona Sbordone
Text – Matteo Thun

Ogni nostro progetto parte dal Genius Loci – l'anima del luogo. Progettare sull'Isola di Sacca Sessola, oggi Isola delle Rose, è stata un'esperienza unica: abbiamo avuto il privilegio di conoscere un luogo magico immerso nella laguna veneziana, con la sua storia, il clima, le zone verdi, l'atmosfera di ogni singolo edificio...

Abbiamo seguito il progetto dalle primissime fasi del concorso fino all'inaugurazione e oltre, in ogni sua sfaccettatura – dal concetto al master plan e alla rivitalizzazione e ricostruzione delle zone verdi, dal design degli interni ai minimi dettagli dello styling. E' appunto per questo che il JW Marriott Venice è diventato un luogo davvero unico, dopo poco più di un anno pluripremiato da vari riconoscimenti – grazie ad un'armonica fusione di tutti gli elementi.

L'attenzione al paesaggio – fatto di acqua, lentezza e silenzio – si è coniugata con la scelta di materiali e fornitori locali. Anche, ma non solo per questo, Rubelli è stato scelto tra i più importanti fornitori del JW Marriott Venice Resort & Spa. Rubelli è un'azienda che rappresenta i valori dell'Italia e riesce nella produzione tessile a unire la tradizione all'innovazione – perfettamente in linea con il concetto del progetto.

— Matteo Thun



Clinton chairs by Rubelli Casa
Tatami 30224/5

Clinton chairs by Rubelli Casa
Tatami 30224/5





All our projects are based on the genius locus, the soul of the place. Designing on an island such as the Isola di Sacca Sessola, now known as the Isola delle Rose, was a unique experience. We were privileged to get to know a magical place surrounded by the Venice lagoon, with its history, climate, greenery and the atmosphere of every single building

We followed the project from the very early phases of the competition up to the inauguration and after, in all its aspects, from concept to master plan, landscaping of the green areas, design of the interiors and the smallest styling details. This is the reason why the JW Marriott Venice has become a truly unique place, receiving many different prizes and awards after just over one year, thanks to the seamless blending of all the elements.

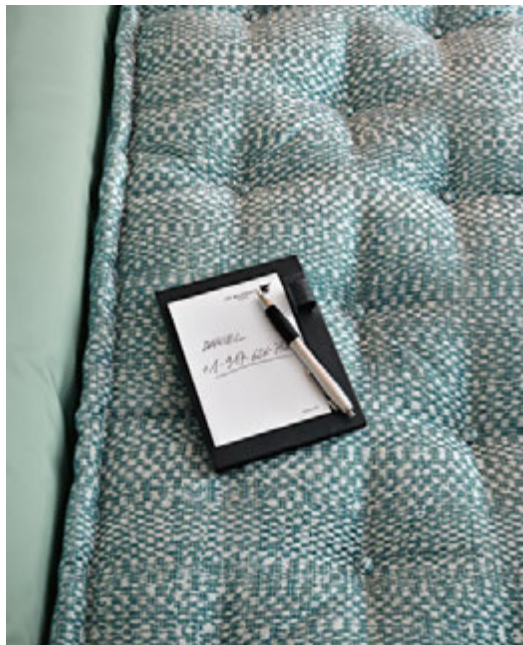
The focus on the landscape, made up of water, a slow pace and silence, was combined with the choice of local suppliers and materials. Another reason, although not the only one, why Rubelli was picked from among the most important suppliers for the JW Marriott Venice Resort & Spa. Rubelli is a company that represents Italian values and succeeds, in its textiles production, in bringing together tradition and innovation, perfectly in line with the concept of the project.

— Matteo Thun



On the left: curtains **Shogun 30227/20**,
Busnelli chairs **Tadao 30226/13**

Bed Stige 30170/7,
Bedspread Shogun 30227/20,
Cushions Tadao 30226/2 and
Stige 30170/7



Curtain Tatami 30224/2,
Busnelli chair Tadao 30226/9,
Rio Novo Desk by Rubelli Casa



Curtain **Tatami 30224/2**

Cushions **Tadao 30226/2** and **Stige 30170/7**

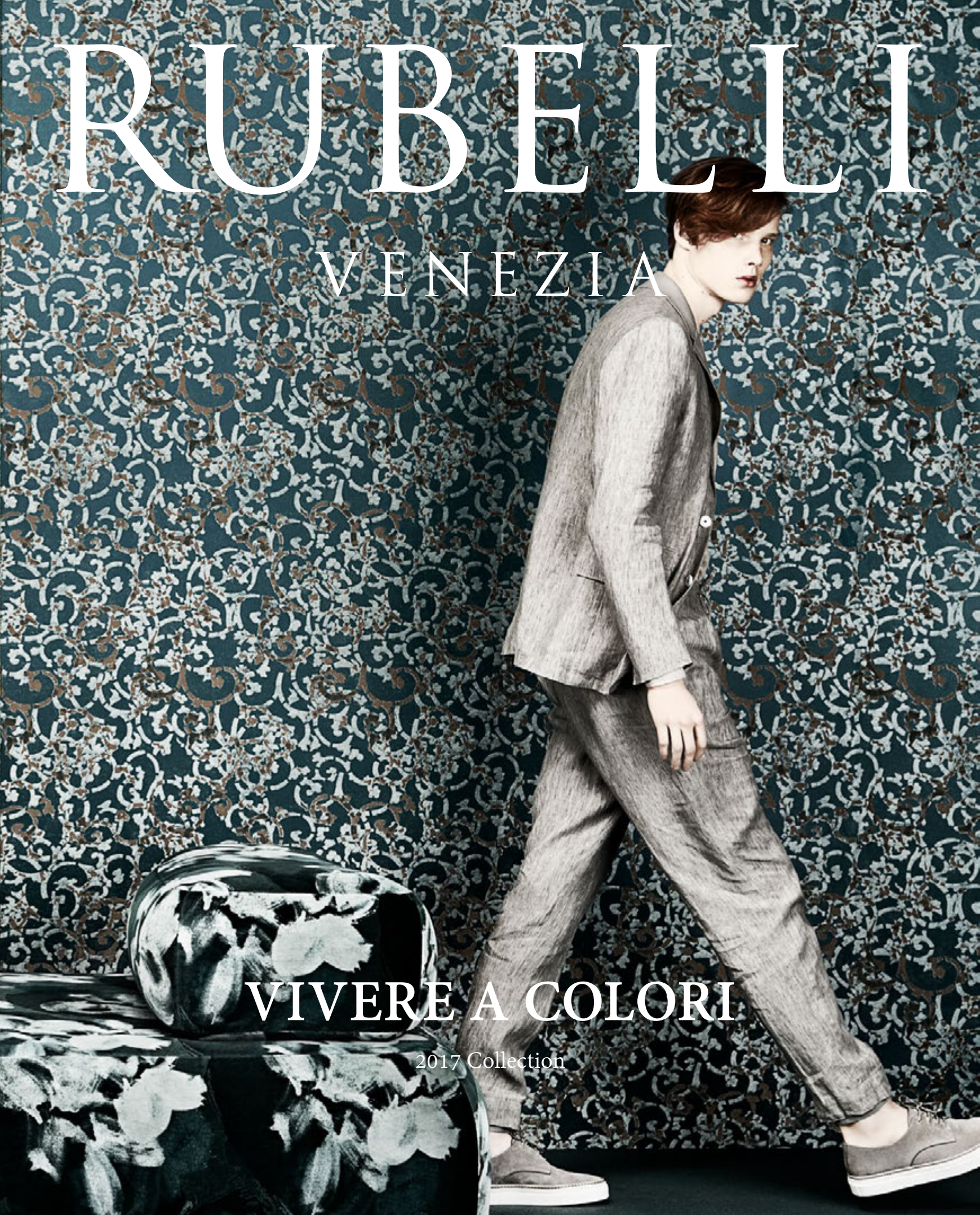


RUBELLI

VENEZIA

VIVERE A COLORI

2017 Collection





Sofa Tadao 30226/10,
Busnelli chairs Tadao 30226/9



On the wall and Colombina chair
by Rubelli Casa Katagami 30223/9

RUBELLI

Hotel Borgonuovo
Chiaravalle, Milano

VENEZIA 2017



Chiaravalle, Buen Retiro

Photo – Gionata Xerra Concept & Styling – Simona Sbordone Text – Mariagiovanna Cosentino

Sheer Hane 30228/4
Dep chair by laCividina
Wabi 30225/10,
Colombina chair
by Rubelli Casa
Katagami 30223/9



C'è un luogo dove è piacevole fermarsi, soggiornare e concedersi una sosta.

Una tappa all'insegna del relax, immersi nella quiete e nel verde di un parco, circondati da cose belle, spazi accoglienti, arredi retrò e tessuti ricercati, mai banali. Nell'antico Borgo di Chiaravalle, ad accogliere il viaggiatore vi è un hotel de charme: Borgonuovo.

Non lontano, l'antichissima Abbazia di Chiaravalle, un complesso monastico cistercense che vigila su questo territorio da quasi mille anni.

Luogo di culto, ma anche paradiso per i cultori di prelibatezze, quali confetture, miele, dolci, erbe aromatiche, prodotti direttamente nel monastero.

Chiaravalle è un'isola di quiete. L'abbazia porta i segni dei tempi – per i diversi rimaneggiamenti succedutisi nei secoli – e del tempo, cui deve quell'aspetto vissuto, talvolta un po' fatiscente, che tanto ci tocca e ci affascina, risvegliando in noi un singolare sentimento di familiare appartenenza.

I colori di quel luogo ci seducono e ci pervadono: il tipico rosso dei mattoni, a suo modo altero ma al contempo indulgente; i tocchi ora accesi ora tenui degli affreschi sacri; i toni caldi delle sculture lignee; il verde sconfinato della campagna tutt'intorno, pronto a mutare con l'avvicinarsi delle stagioni.

L'hotel de charme ha fatto propri i cromatismi del luogo, inserendoli con maestria nei suoi spazi, dove i colori, decisi e autentici, giocano con i materiali in un dialogo mai scontato.

Chiaravalle è un luogo da non mancare.

E il viaggiatore attento l'avrà certamente già annotato nel suo carnet di viaggio.



Hall divanetto sofa by Arflex
Katagami 30223/11,
sheer Shogun 30227/3



There's a place where stopping, staying and taking a break is a pleasure.

A stop-off tailored to relaxation, set fully within the peace and quiet and greenery of a park, surrounded by beautiful things, welcoming spaces, retro furniture and sophisticated and totally original fabrics.

In the ancient village of Chiaravalle there's a hotel de charme to welcome travellers: the Borgonuovo.

Ancient Chiaravalle abbey is close by, a group of Cistercian monastery buildings which has watched over this area for almost one thousand years.

A place of worship but also heaven for gourmets with delicacies that include jam, honey, sweets and aromatic herbs, produced directly at the monastery.

Chiaravalle is a haven of peace. The abbey shows the signs of the times, with the various work carried out over the centuries, and of the passing of time, giving it its worn and at times slightly dilapidated look, so moving and attractive and awakening in us a distinctive feeling of familiar belonging.

The colours of the place are appealing and pervasive, with the typical red of bricks, proud yet indulgent at the same time, the varyingly bright and soft touches of the sacred frescoes, the warm shades of the wood sculptures and the boundless green of the countryside all around, ready to change in line with the seasons. The boutique hotel has taken over the place's colour schemes, masterfully using them in its spaces, where the strong and genuine colours play with the materials in an ever-surprising interaction.

Chiaravalle is a must-see spot, and attentive travellers will certainly already have made a note of it in their travel journals.



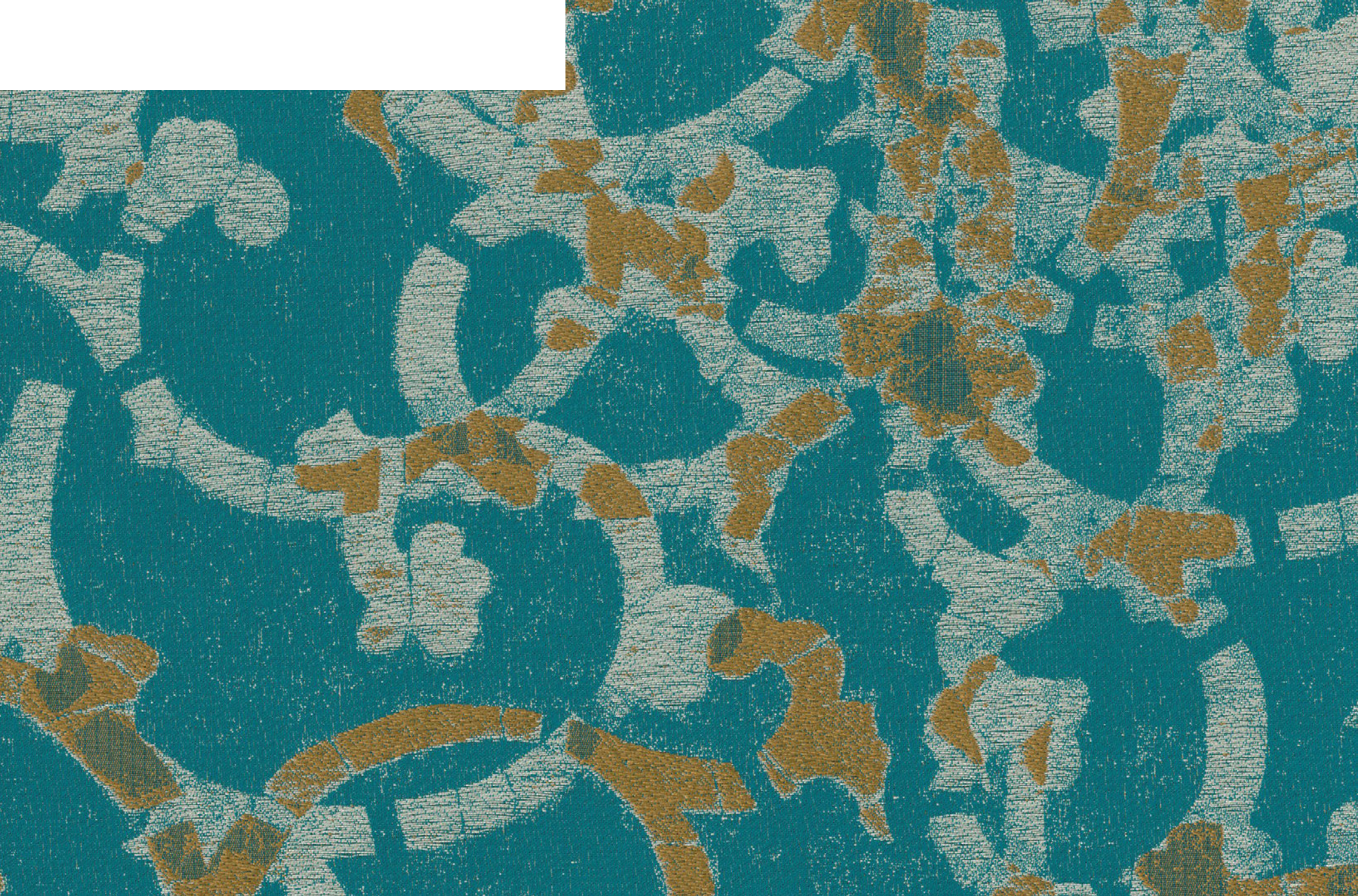


On the left: Bedspread and cushion **Wabi 30225/7**, cushion **Katagami 30223/7**, Piron chair by Rubelli Casa **Tadao 30226/22**, on the right: **Katagami 30223/7**



Pouf Tadao 30226/19,
Creed Wood chair by Minotti
Tatami 30224/8, curtain
Tadao 30226/25, sheer
Hane 30228/2





Ritratti

Photo – Piero Gemelli
 Concept & Styling – Beatrice Rossetti
 Assisted by – Wilson Pologato and Veronica Leali
 Poem – Mariagiovanna Cosentino

**Sculture e miniature,
 fotografie e gigantografie:
 volti e corpi che abitano
 i nostri spazi quotidiani
 in una apparente fissità.**

**Non tutti hanno posato
 e solo qualcuno ha mentito
 fingendosi chi di fatto non è
 per il tempo di un ritratto.**

**Sculpture and miniatures,
 photos and poster photographs:
 bodies and faces that occupy
 our day-to-day spaces
 with apparent permanence.**

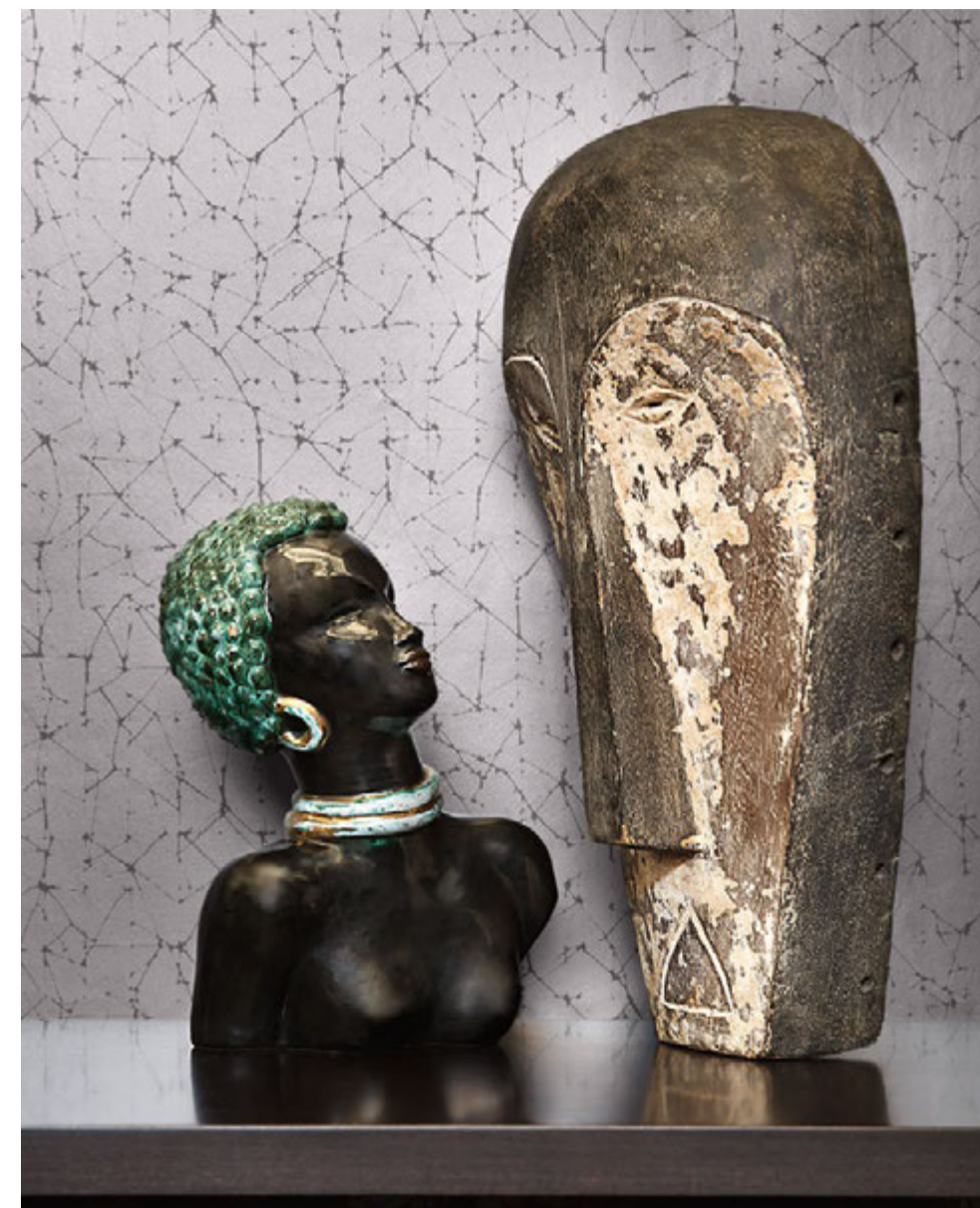
**Not all of them have posed
 and only some lied,
 pretending to be someone else
 for the space of a portrait.**



Craquelé Wall 23024/2,
Daybed Traveller by Porro
Mercurio 30202/7,
cushions Mercurio 30202/7,
Tatami 30224/3,
Taidai 30214/3,
Roi Soleil 30212/2



Vermeer Wall 23025/5,
Bench Caesar 30204/10



RUBELLI

On the left: Vermeer 30203/3
and Taidai 30214/4
on the right: Daybed Magi
by Flexform Taidai 30214/4,
cushions Vermeer 30203/3

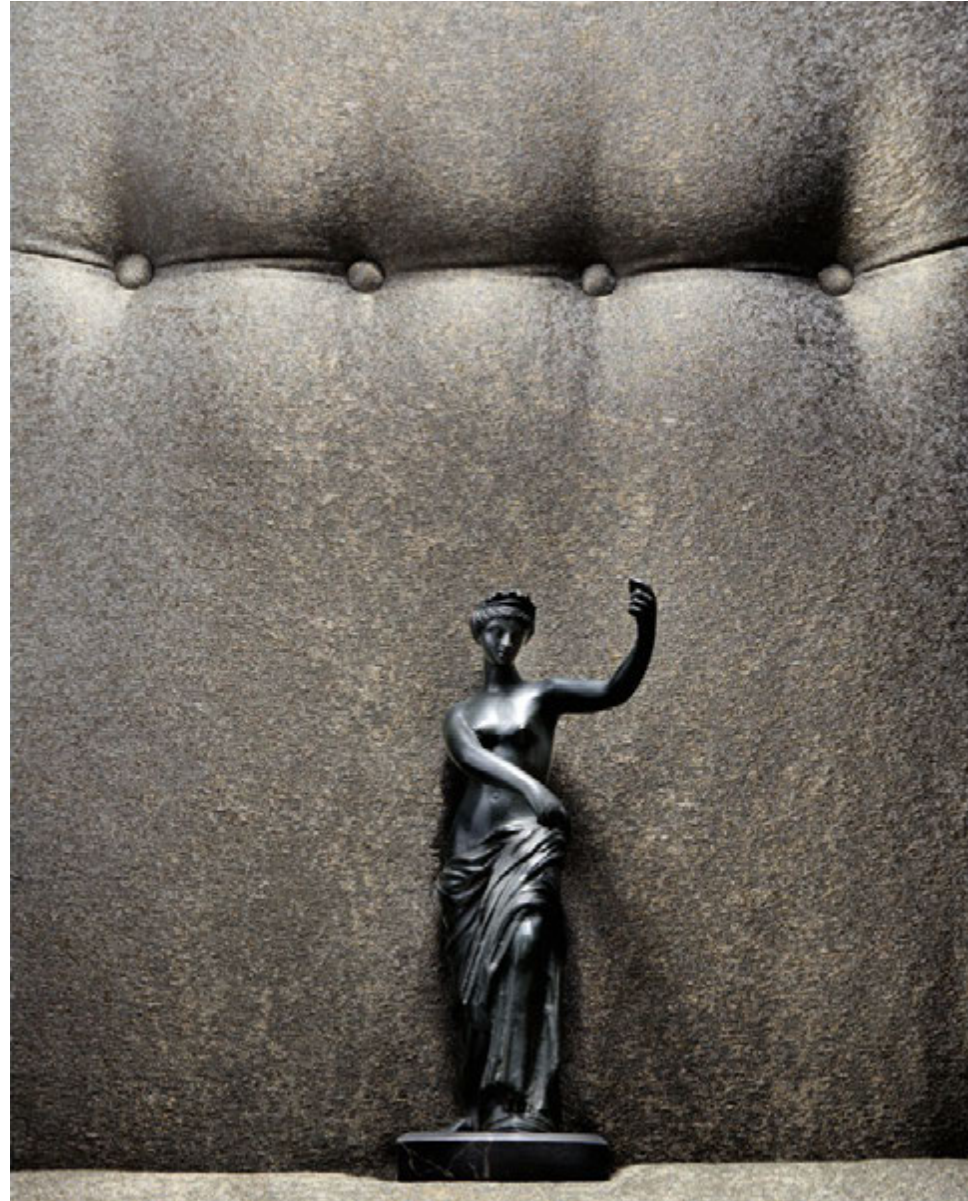


Traffic chairs by Magis
Sanandaj 30201/3

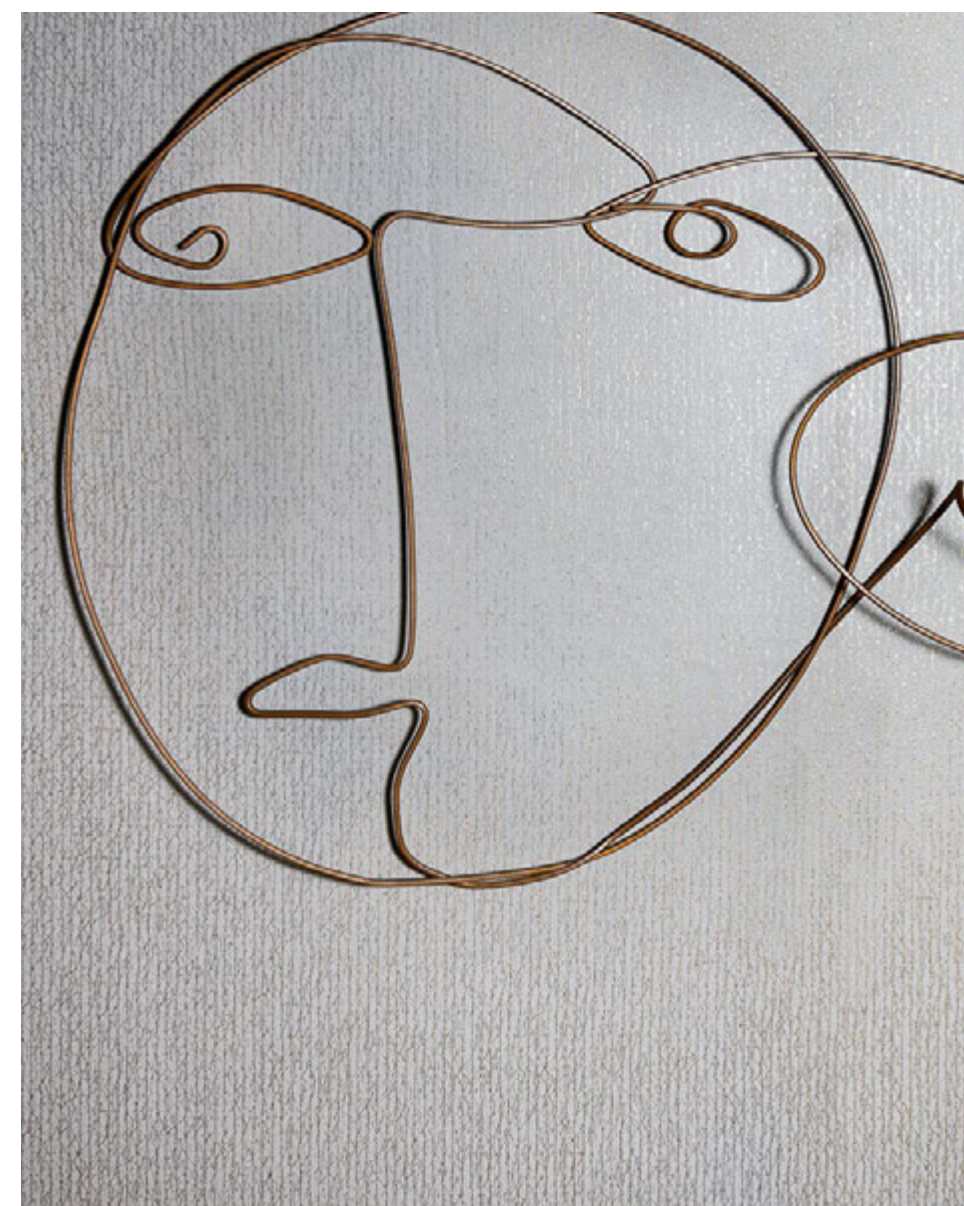


RUBELLI

On the left: Mercurio 30202/6,
on the right: Mirabilis Wall 23028/3,
chair Caesar 30204/8



On the left:
Shibori Wall 23026/3,
on the right:
Craquelé Wall 23024/3



WALLCOVERING INDEX

Orion Wall



23023-1
AVORIO*



23023-2
SABBIA*

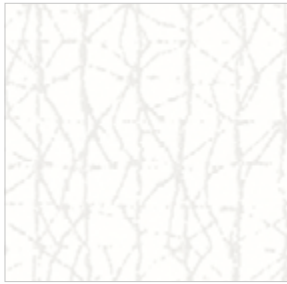


23023-3
POLVERE*



23023-4
MADREPERLA*

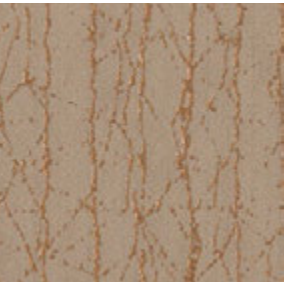
Craquelé Wall



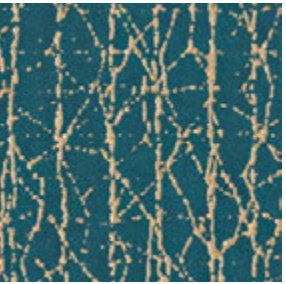
23024-1
BIANCO*



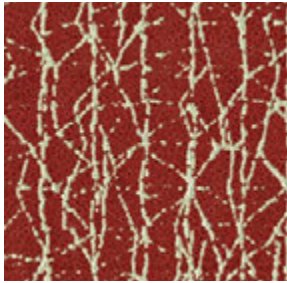
23024-2
AVORIO*



23024-3
SABBIA*



23024-4
PAVONE*



23024-5
LACCA*

Vermeer Wall



23025-1
AVORIO



23025-2
AURORA

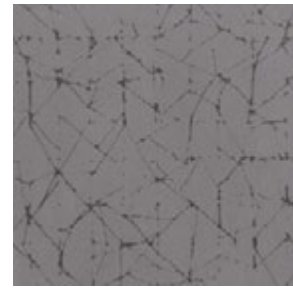


23025-3
MADREPERLA



23025-4
SABBIA

Vermeer
Wall

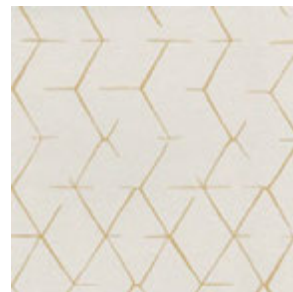


23025-5
GRIGIO

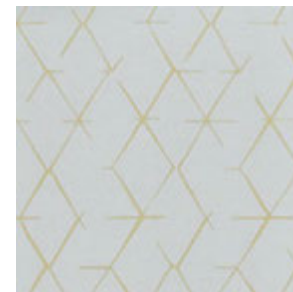


23025-6
IRIS

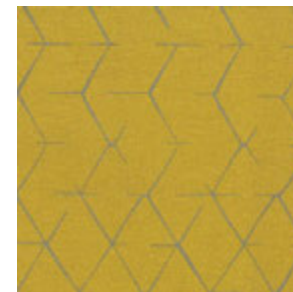
Shibori
Wall



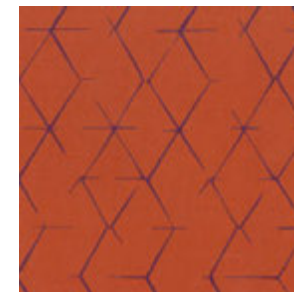
23026-1
PIETRA



23026-2
POLVERE



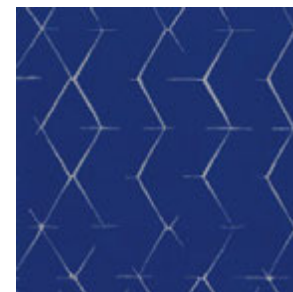
23026-3
ORO



23026-4
CORALLO

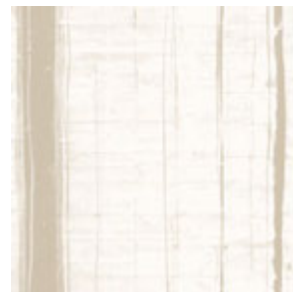


23026-5
PAVONE

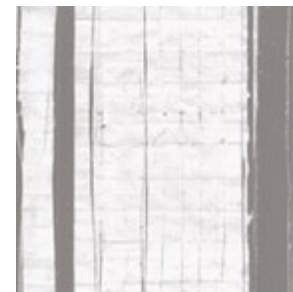


23026-6
BLUETTE

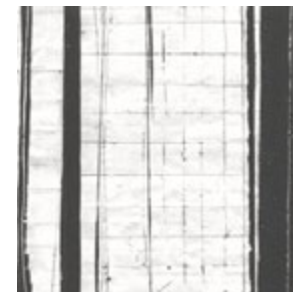
Metropolis
Wall



23027-1
SABBIA



23027-2
GRIGIO



23027-3
ANTRACITE



23027-4
AVORIO

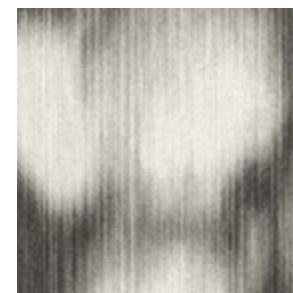
Mirabilis
Wall



23028-1
SABBIA



23028-2
ARGENTO



23028-3
ANTRACITE

TEXTILE INDEX

Cordoba



30200-1
AVORIO



30200-2
SABBIA



30200-3
ARGENTO



30200-4
MADREPERLA



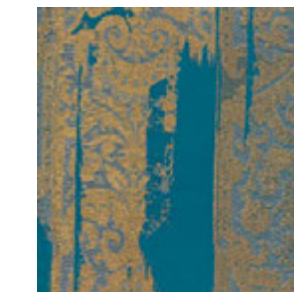
30200-5
CIPRIA



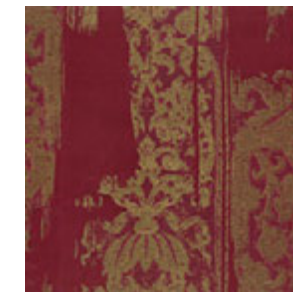
30200-6
ACQUA



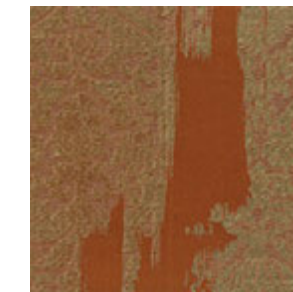
30200-7
GIALLO



30200-8
PAVONE

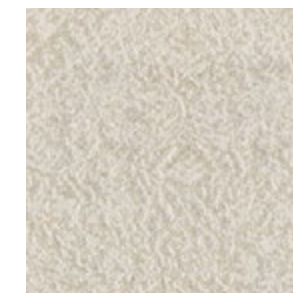


30200-9
RUBINO



30200-10
RUGGINE

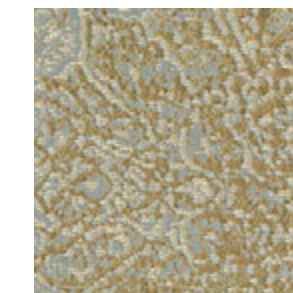
Sanandaj



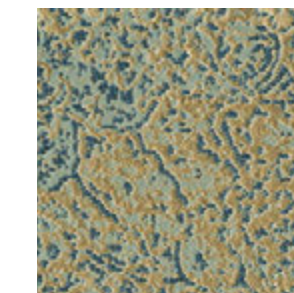
30201-1
AVORIO



30201-2
SABBIA

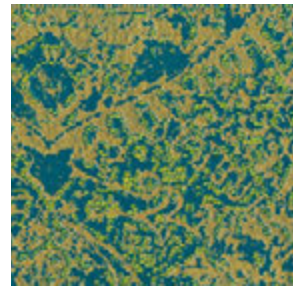


30201-3
MADREPERLA

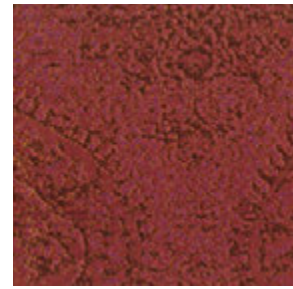


30201-4
ACQUA

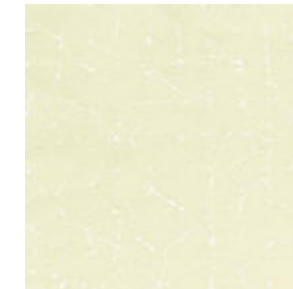
Sanandaj



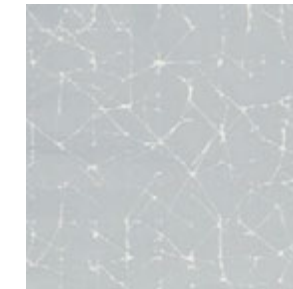
30201-5
PAVONE



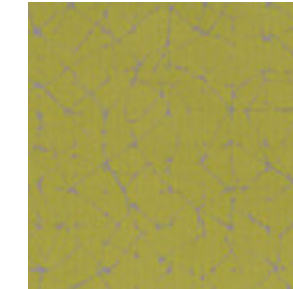
30201-6
RUBINO



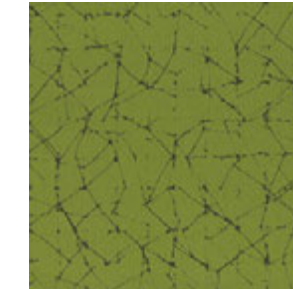
30203-9
GIALLO NAPOLI



30203-10
NUVOLA



30203-11
ALGA



30203-12
ERBA

Mercurio



30202-1
AVORIO*



30202-2
SABBIA*



30202-3
MADREPERLA*



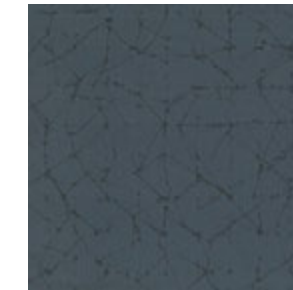
30202-4
ORO*



30203-13
PAVONE



30203-14
BLUETTE



30203-15
IRIS



30203-16
ARANCIO



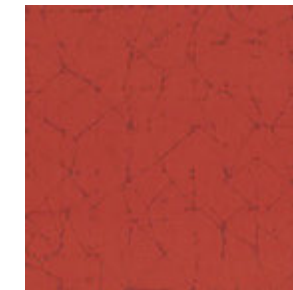
30202-5
ACQUA*



30202-6
PIOMBO*



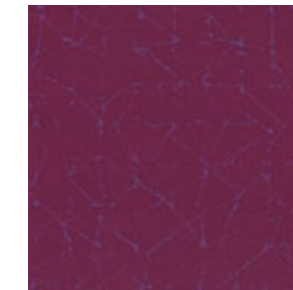
30202-7
BRONZO*



30203-17
CORALLO



30203-18
RUBINO

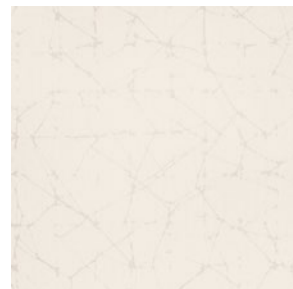


30203-19
CARDINALE



30203-20
FUXIA

Vermeer



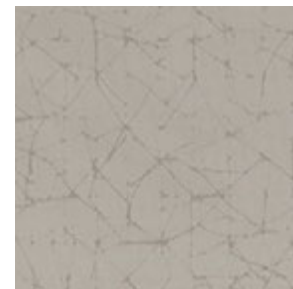
30203-1
AVORIO



30203-2
SABBIA



30203-3
LEGNO



30203-4
MADREPERLA

Caesar



30204-1
AVORIO*



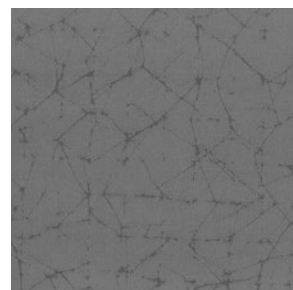
30204-2
SABBIA*



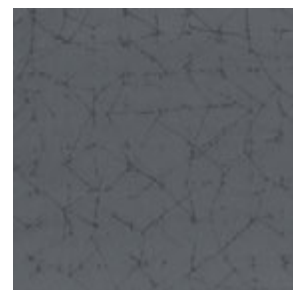
30204-3
PIETRA*



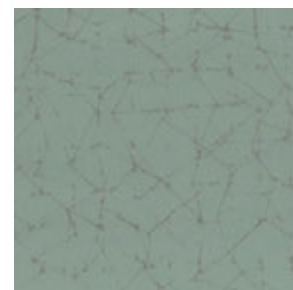
30204-4
MADREPERLA*



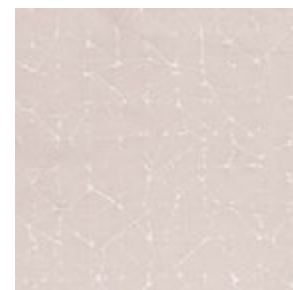
30203-5
GRIGIO



30203-6
ARDESIA



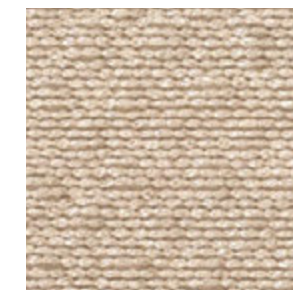
30203-7
ACQUA



30203-8
GLICINE



30204-5
ARGILLA*



30204-6
LEGNO*



30204-7
AURORA*

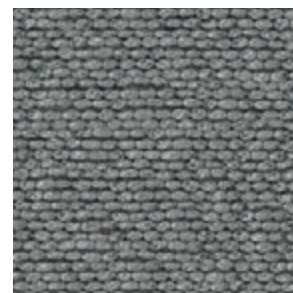


30204-8
ARGENTO*

Caesar



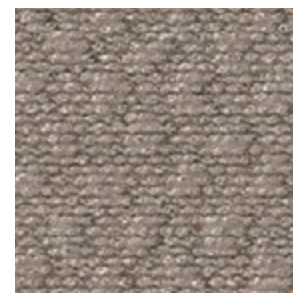
30204-9
GRIGIO*



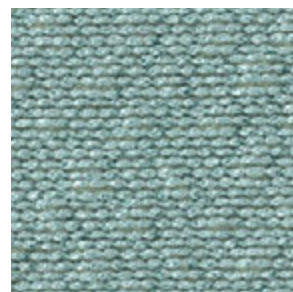
30204-10
FUMO*



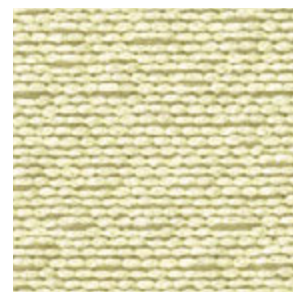
30204-11
VISIONE*



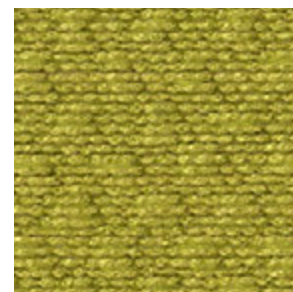
30204-12
TORTORA*



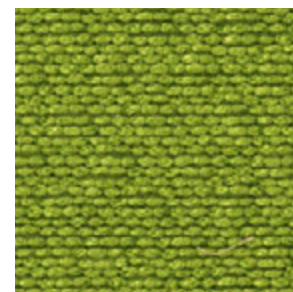
30204-13
ACQUA*



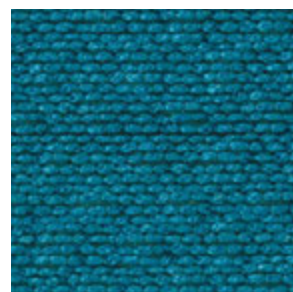
30204-14
GIALLO NAPOLI*



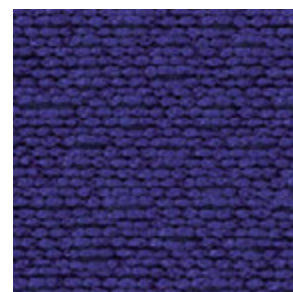
30204-15
ALGA*



30204-16
ERBA*



30204-17
PAVONE*



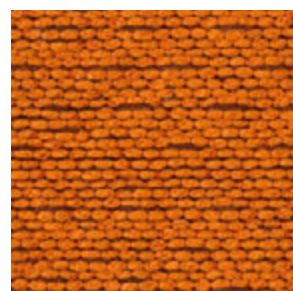
30204-18
BLUETTE*



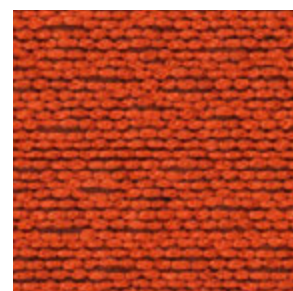
30204-19
BLU*



30204-20
IRIS*



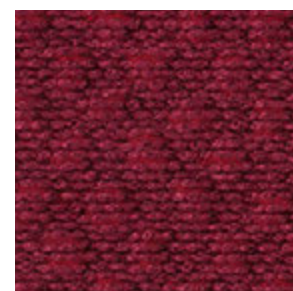
30204-21
ARANCIO*



30204-22
CORALLO*



30204-23
ROSSO*



30204-24
RUBINO*



30204-25
CARDINALE*

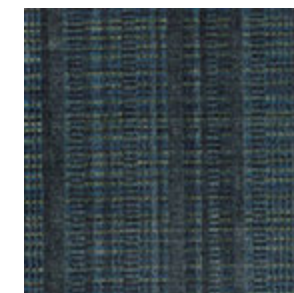
Fifth Avenue



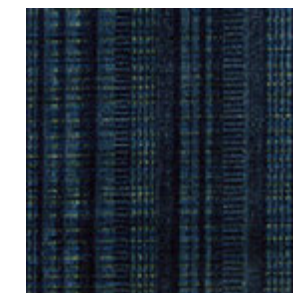
30205-1
MADREPERLA



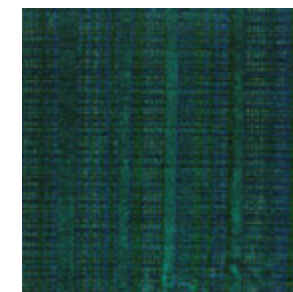
30205-2
VISIONE



30205-3
ARDESIA



30205-4
BLU



30205-5
PAVONE



30205-6
ROSSO

Salomè



30206-2
DORATA

Giuditta

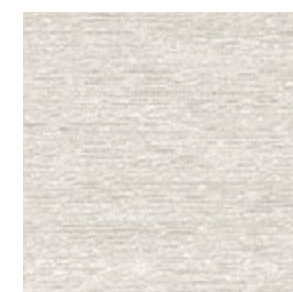


30207-1
DORATA

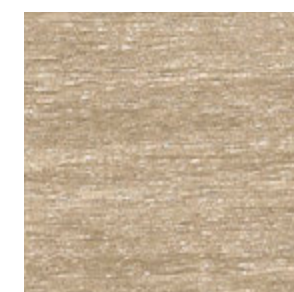
Bhagalpur



30208-1
AVORIO*



30208-2
MADREPERLA*



30208-3
SABBIA*



30208-4
PIETRA*

Marie Antoinette



30209-1
ROSA



30209-2
ACQUA



30209-3
MALVA

Figaro



30210-1
PRIMAVERA



30210-2
AURORA

Dauphin



30211-1
AVORIO



30211-2
SABBIA



30211-3
ORO



30211-4
ACQUA

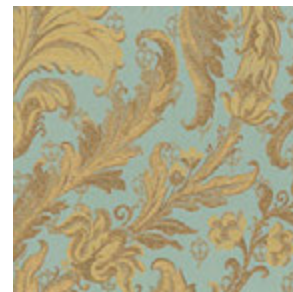
Roi Soleil



30212-1
AVORIO



30212-2
MADREPERLA



30212-3
ACQUA



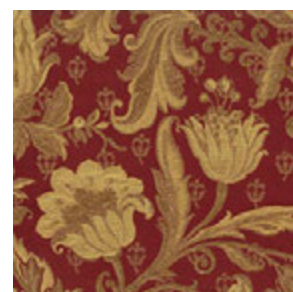
30212-4
ORO



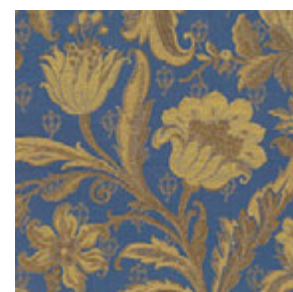
30212-5
ERBA



30212-6
ROSSO

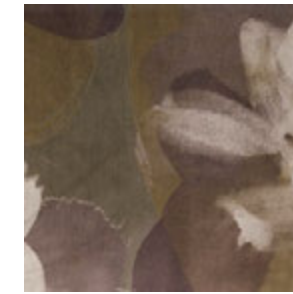


30212-7
RUBINO

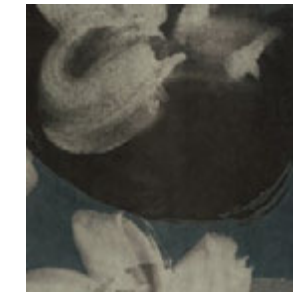


30212-8
BLU

Mrs Robinson



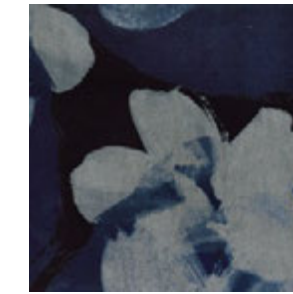
30213-1
LEGNO



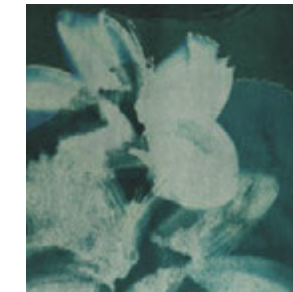
30213-2
ARDESIA



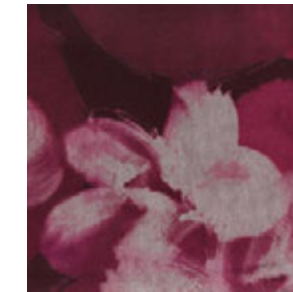
30213-3
ACQUA



30213-4
BLU



30213-5
SMERALDO

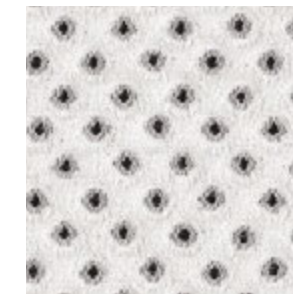


30213-6
PETUNIA

Taidai



30214-1
AVORIO*



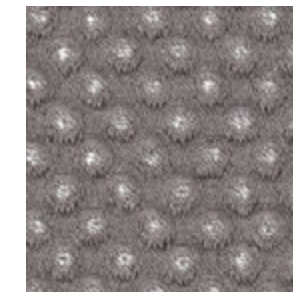
30214-2
PEPE SALE*



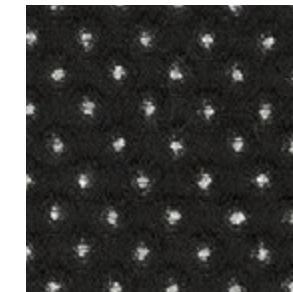
30214-3
BEIGE*



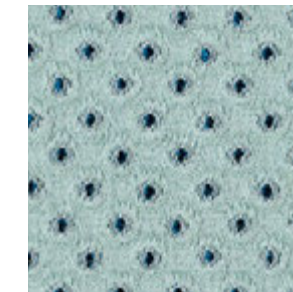
30214-4
TABACCO*



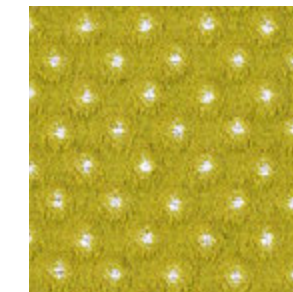
30214-5
GRIGIO*



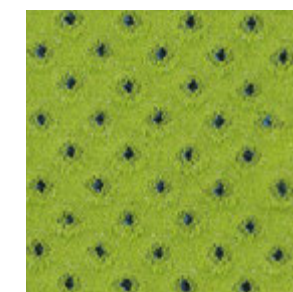
30214-6
NERO*



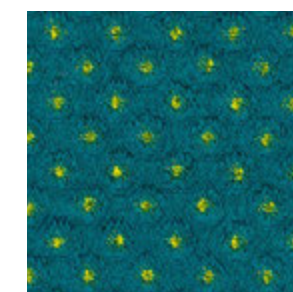
30214-7
ACQUA*



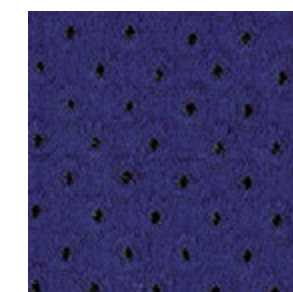
30214-8
ALGA*



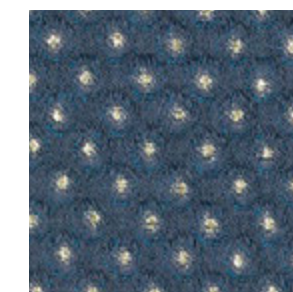
30214-9
ERBA*



30214-10
PAVONE*

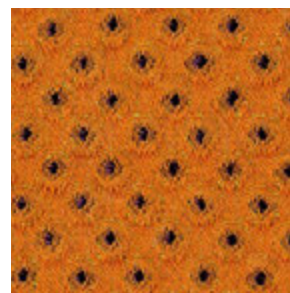


30214-11
BLUETTE*

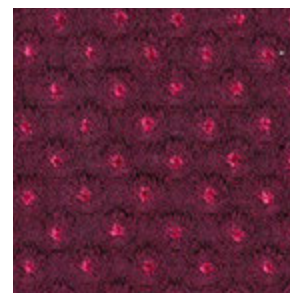


30214-12
IRIS*

Taidai



30214-13
ARANCIO*

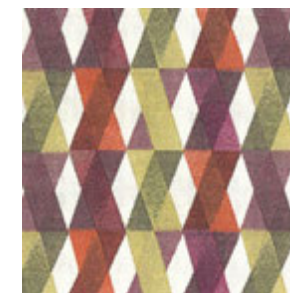


30214-14
CARDINALE*



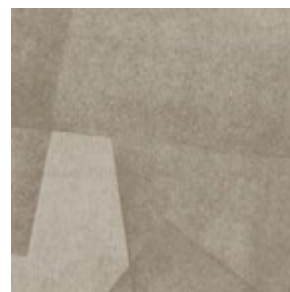
30214-15
FUXIA*

Vasarely

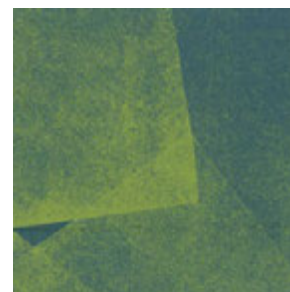


30217-5
ARANCIO

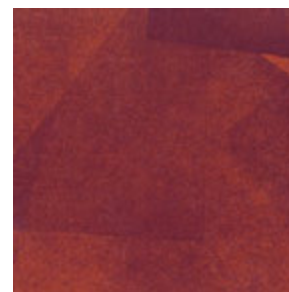
Boccioni



30215-1
SABBIA

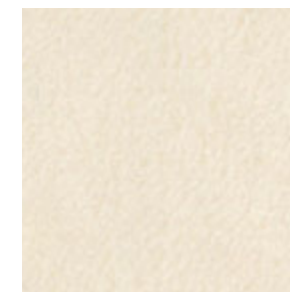


30215-2
TURCHESE VERDE



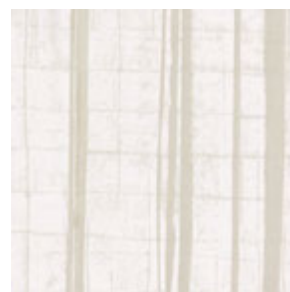
30215-3
CARDINALE ROSSO

Teddy



30219-1
AVORIO*

Metropolis



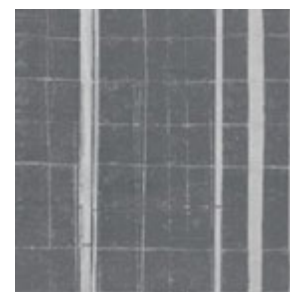
30216-1
AVORIO



30216-2
MADREPERLA

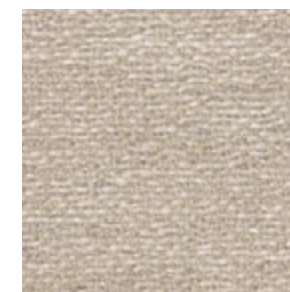


30216-3
SABBIA



30216-4
GRIGIO

Harris



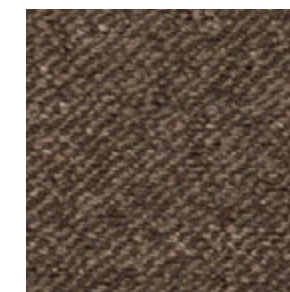
30220-1
PIETRA*



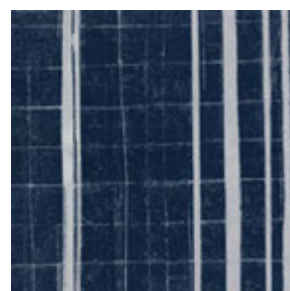
30220-2
SABBIA*



30220-3
ARGILLA*



30220-4
TABACCO*



30216-5
BLU



30216-6
ALGA



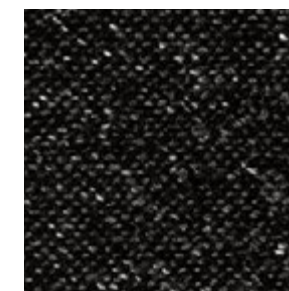
30216-7
ACQUA



30220-5
ARGENTO*



30220-6
GRIGIO*



30220-7
ANTRACITE*

Vasarely



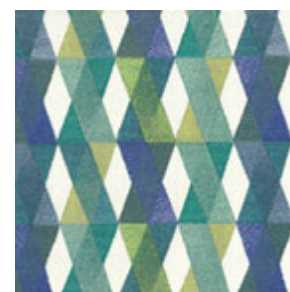
30217-1
AVORIO



30217-2
BEIGE



30217-3
GIALLO



30217-4
VERDE

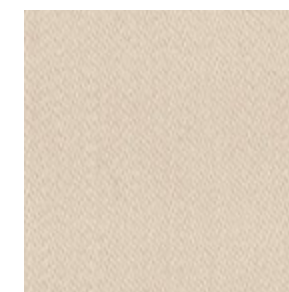
Savile Row



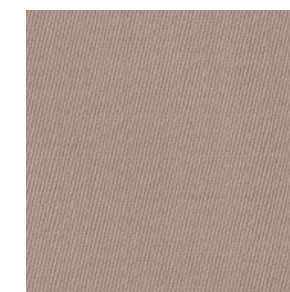
30221-1
AVORIO*



30221-2
PIETRA*

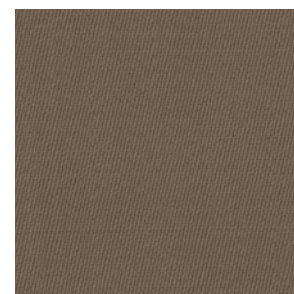


30221-3
SABBIA*

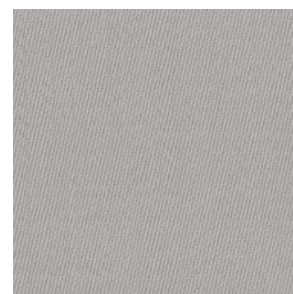


30221-4
TORTORA*

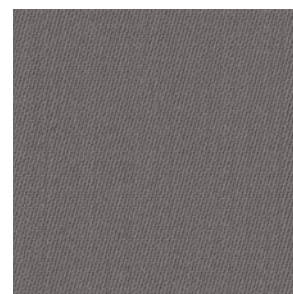
Savile Row



30221-5
CASTORO*



30221-6
MADREPERLA*

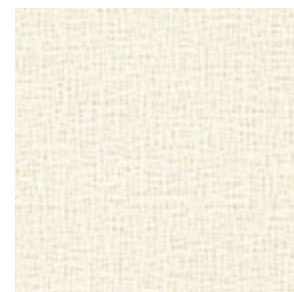


30221-7
GRIGIO*



30221-8
ANTRACITE*

Cuddle



30222-1
AVORIO*



30222-2
BEIGE*



30222-3
MADREPERLA*

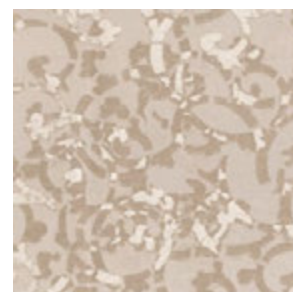
Katagami



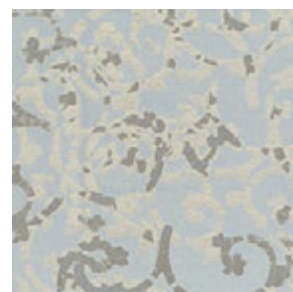
30223-1
AVORIO



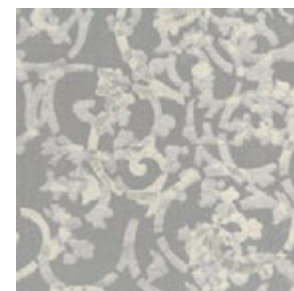
30223-2
GIALLO NAPOLI



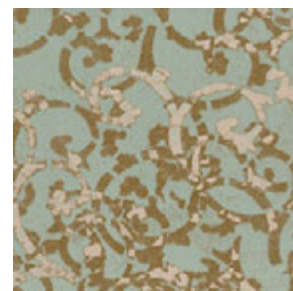
30223-3
CIPRIA



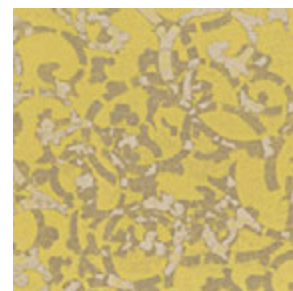
30223-4
NUVOLA



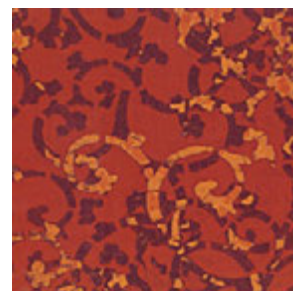
30223-5
ARGENTO



30223-6
ACQUA



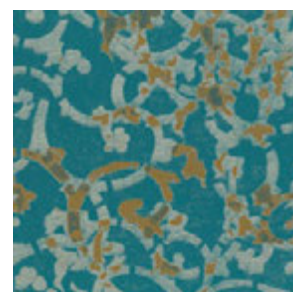
30223-7
ORO



30223-8
CORALLO



30223-9
IRIS



30223-10
PAVONE



30223-11
ERBA

Tatami



30224-1
PIETRA



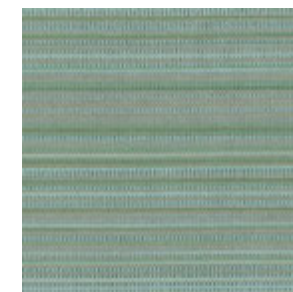
30224-2
SABBIA



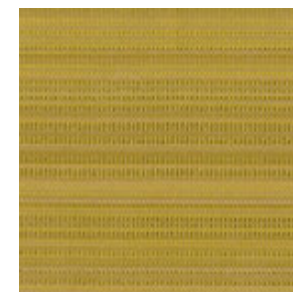
30224-3
CASTORO



30224-4
GRIGIO



30224-5
ACQUA



30224-6
ORO



30224-7
RUGGINE



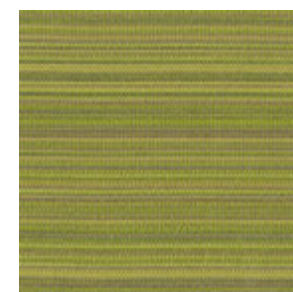
30224-8
ROSSO



30224-9
IRIS



30224-10
PAVONE



30224-11
ERBA

Wabi



30225-1
AVORIO*



30225-2
SABBIA*



30225-3
GIALLO NAPOLI*



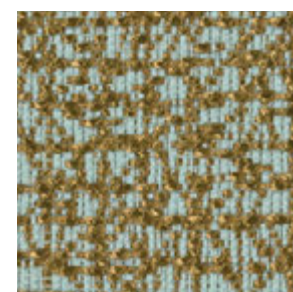
30225-4
CIPRIA*



30225-5
CIELO*



30225-6
ARGENTO*

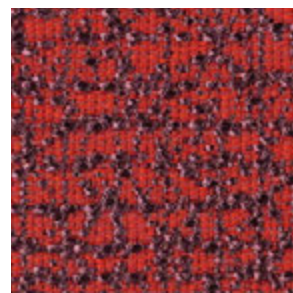


30225-7
ACQUA*

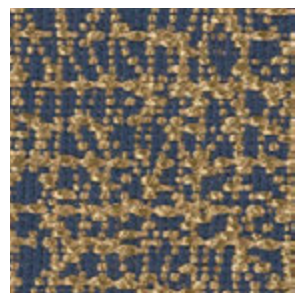


30225-8
ORO*

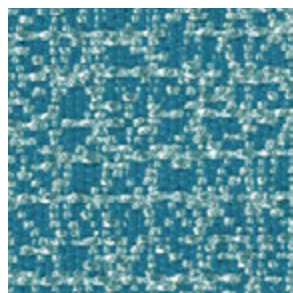
Wabi



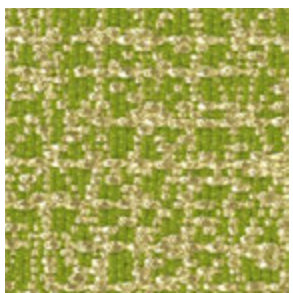
30225-9
CORALLO*



30225-10
IRIS*

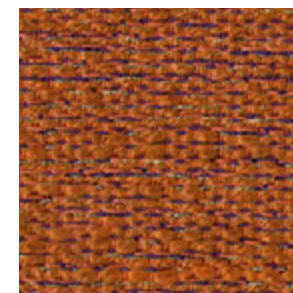


30225-11
PAVONE*

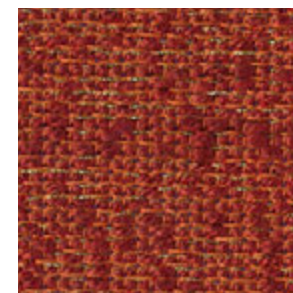


30225-12
ERBA*

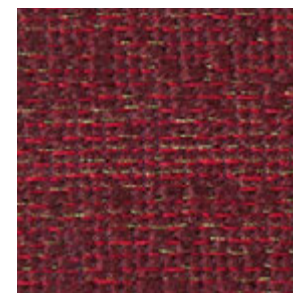
Tadao



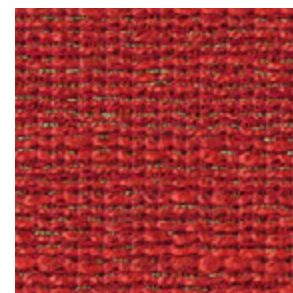
30226-17
ARANCIO*



30226-18
RUGGINE*



30226-19
GRANATA*



30226-20
CORALLO*

Tadao



30226-1
AVORIO*



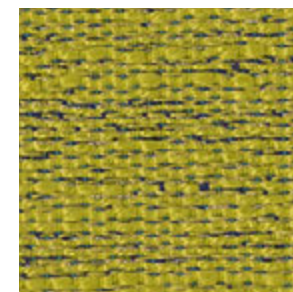
30226-2
SABBIA*



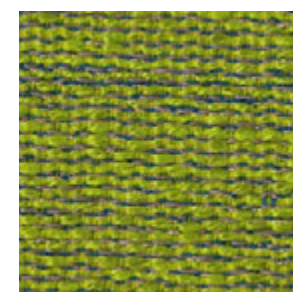
30226-3
PIETRA*



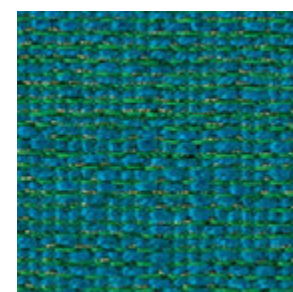
30226-4
LEGNO*



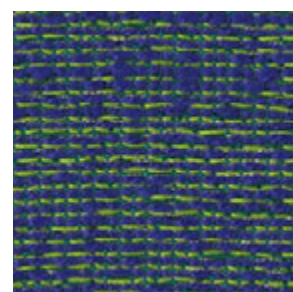
30226-21
ALGA*



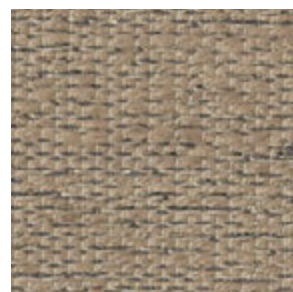
30226-22
ERBA*



30226-23
PAVONE*



30226-24
BLUETTE*



30226-5
SPAGO*



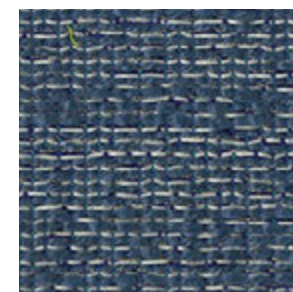
30226-6
VISONO*



30226-7
ARGENTO*



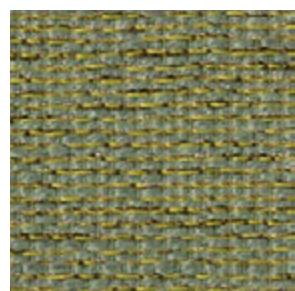
30226-8
GRIGIO*



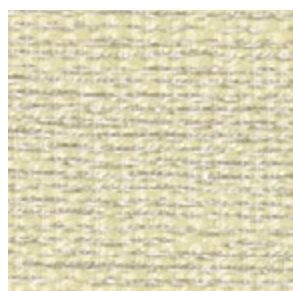
30226-25
IRIS*



30226-9
ACQUA*



30226-10
GIADA*

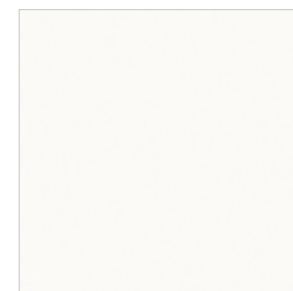


30226-11
GIALLO NAPOLI*

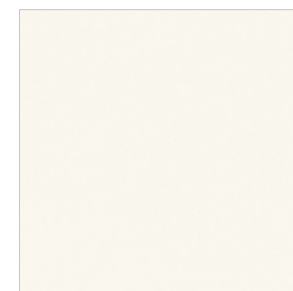


30226-12
CANARINO*

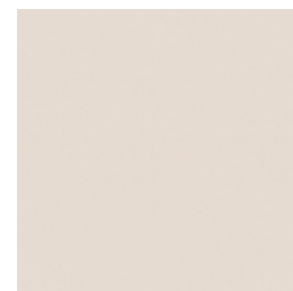
Shogun



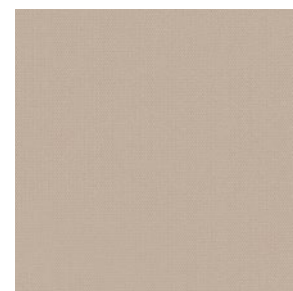
30227-1
BIANCO*



30227-2
AVORIO*



30227-3
SABBIA*



30227-4
PIETRA*



30226-13
ACQUAMARINA*



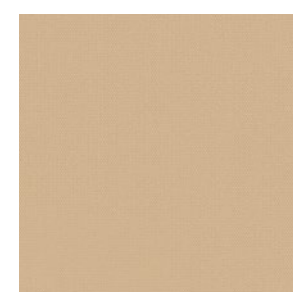
30226-14
GLICINE*



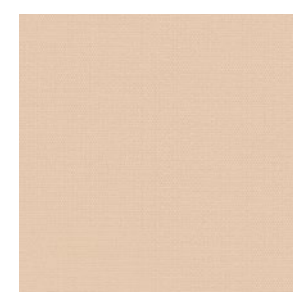
30226-15
CIPRIA*



30226-16
ORO*



30227-5
NOCCIOLA*



30227-6
LEGNO DI ROSA*



30227-7
CREMA*

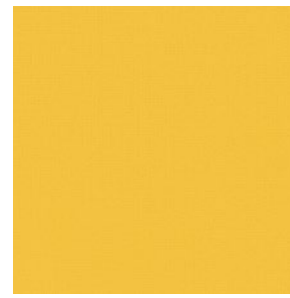


30227-8
GIALLO NAPOLI*

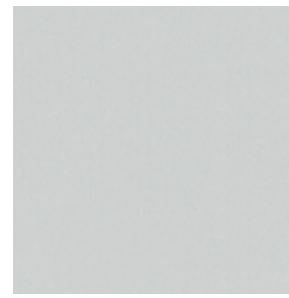
Shogun



30227-9
LIMONE*



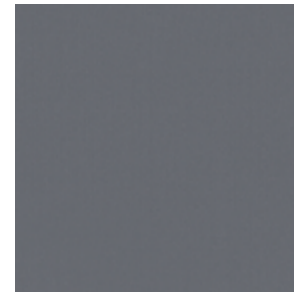
30227-10
MANGO*



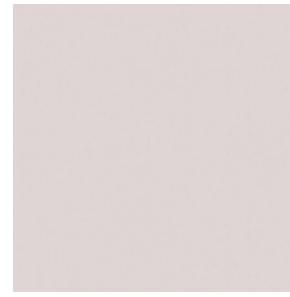
30227-11
MADREPERLA*



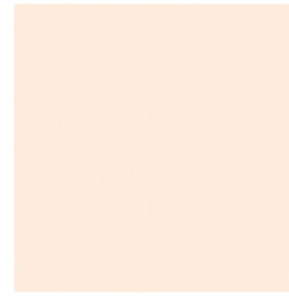
30227-12
GRIGIO*



30227-13
ARDESIA*



30227-14
GLICINE*



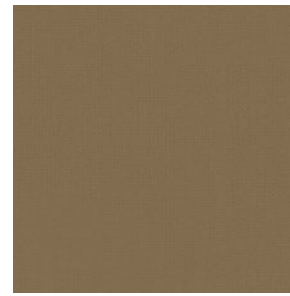
30227-15
CIPRIA*



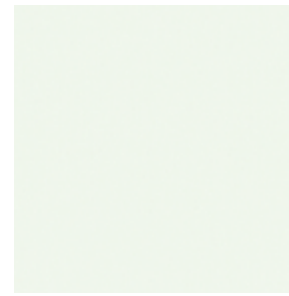
30227-16
ROSA*



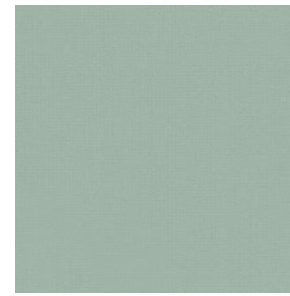
30227-17
CARMELLO*



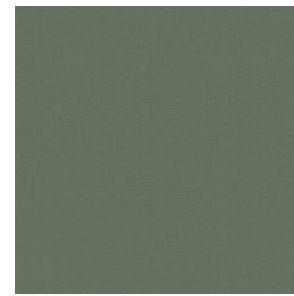
30227-18
VISIONE*



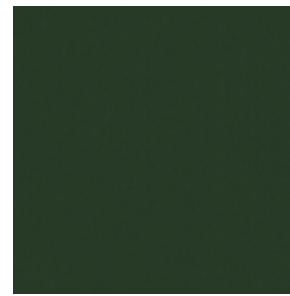
30227-19
ACQUAMARINA*



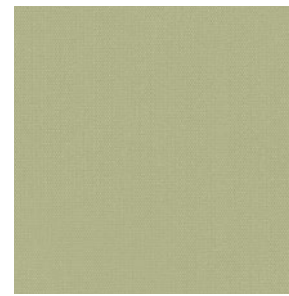
30227-20
ACQUA*



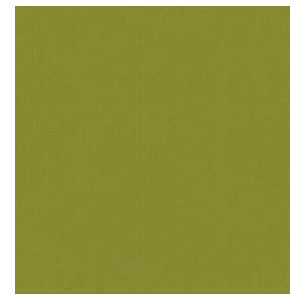
30227-21
GIADA*



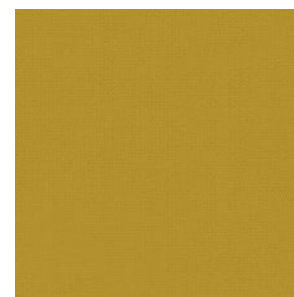
30227-22
FORESTA*



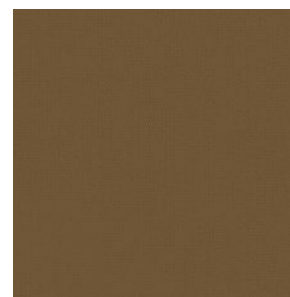
30227-23
SALICE*



30227-24
ERBA*



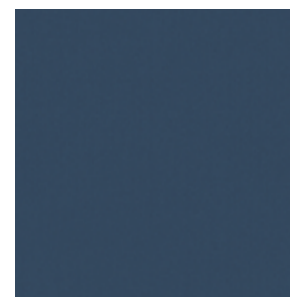
30227-25
SENAPE*



30227-26
BRONZO*



30227-27
PAVONE*



30227-28
IRIS*

Shogun



30227-29
BLUETTE*



30227-30
BLU*



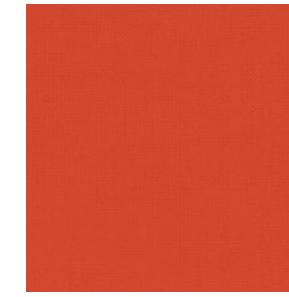
30227-31
NERO*



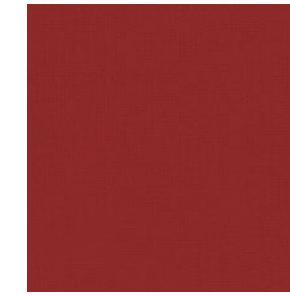
30227-32
RUGGINE*



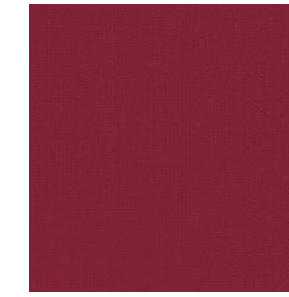
30227-33
ARANCIO*



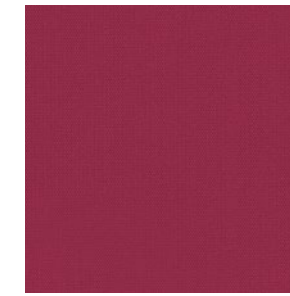
30227-34
CORALLO*



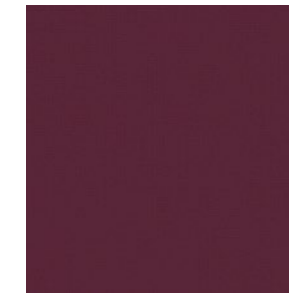
30227-35
ROSSO*



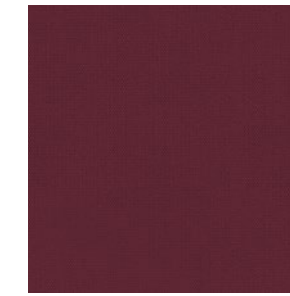
30227-36
RUBINO*



30227-37
FUXIA*



30227-38
CARDINALE*



30227-39
VINO*

Hane



30228-1
AVORIO*



30228-2
SABBIA*



30228-3
MADREPERLA*



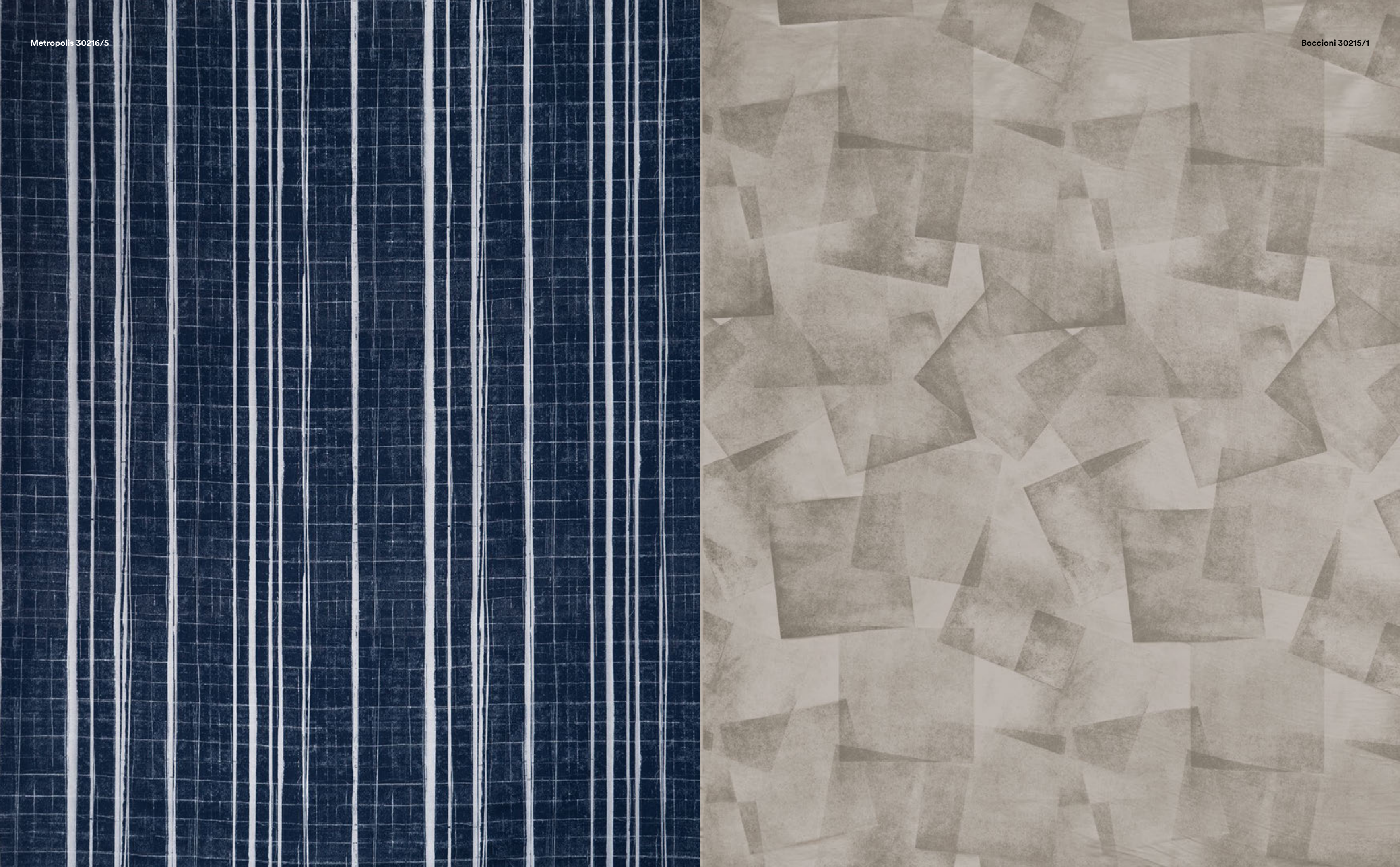
30228-4
ARGILLA*

* This image shows a 25 cm (10") cut of the fabric.

PATTERNS









To browse all the Rubelli Group collections and for technical info,
please visit www.rubelli.com



WWW.RUBELLI.COM