

HARLEQUIN



mirador

PRESS RELEASE S/S 2020

mirador

HARLEQUIN MIRADOR HEADS TO IBIZA THIS SEASON,
CAPTURING THE SPIRIT, STYLE AND GLAMOUR OF THIS
ICONIC DESTINATION, NEW FOR SS20.

With a glorious, chilled-out vibe, Harlequin introduces Mirador, an irresistible range of wallpapers, drapes and upholstery fabric, new for SS20.

Named after the Spanish word for 'lookout', this launch sings of stunning panoramic vistas and the glamorous interiors of sun-kissed villas perched high upon towering Ibizan hills. Spanish and African influences come alive with eye-catching, inspirational designs, opening up a treasure trove of international style.

Claire Greenfield, head of design at Harlequin says, "Mirador is all about introducing a sophisticated, laid-back destination style into the home. Think elements from achingly cool Ibizan interiors, buzzing social spaces and the far-reaching horizon that wraps around this island paradise."

Combining six upholstery fabrics, eight wallpapers and 11 drapes, this launch is rich in variety, from its hand-drawn, painterly palms and tropical flora to confident stripes and tessellating geometrics.

Designs such as Alvaro and Habanera introduce a botanical feel, contrasting with Sabi's interpretation on an animal print. Samburu's chevrons and Kalimba's tribal motifs add dramatic woven layers to the collection that's awash with colour and aspirational warmth.

Wallpapers, in softly coloured pared-back tones are adorned with metallic highlights, showcasing the intricate detail of stylised florals, shattered geometrics and animal inspired patterns and motifs.

Almost a paradigm of Ibizan life, Mirador contrasts vibrant sociability with the relaxed, expressive feel of this most alluring of lifestyles in three inspiring pattern books: Mirador Wallpapers, Mirador Drapes and Mirador Upholstery. These are complemented by two luxurious plain books, Montpelier and Florio.

The launch comprises three books: Mirador Wallpapers, Mirador Upholstery and Mirador Drapes. To see the Mirador collection in its entirety, please visit stylelibrary.com/harlequin **#harlequinmirador** is available via a network of stockists nationally and internationally

PRINTS AND WALLPAPERS DESIGNED AND MANUFACTURED IN THE UK

[STYLELIBRARY.COM/HARLEQUIN](https://stylelibrary.com/harlequin)

HARLEQUIN





For further information, images or product requests please contact:
Harlequin Press Office Tel: +44 (0) 1895 221005 Email: press@stylelibrary.com

















20



21



22

For further information, images or product requests please contact:
Harlequin Press Office Tel: +44 (0) 1895 221005 Email: press@stylelibrary.com



23



24



25











34

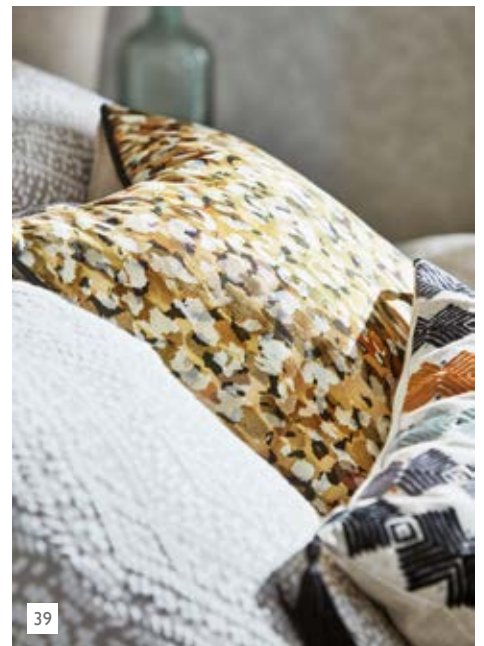


35



36

For further information, images or product requests please contact:
Harlequin Press Office Tel: +44 (0) 1895 221005 Email: press@stylelibrary.com





For further information, images or product requests please contact:
Harlequin Press Office Tel: +44 (0) 1895 221005 Email: press@stylelibrary.com







MIRADOR WALLPAPERS

With a glorious, chilled-out vibe, Harlequin Mirador is an irresistible range of wallpapers inspired by stunning panoramic vistas and the glamorous interiors of sun-kissed villas perched high upon Ibiza hills. Named after the Spanish word for 'lookout', Spanish and African influences come alive with eye-catching, inspirational designs, opening up a treasure trove of international style.

NITENDE

With a relaxed, hand drawn look, large scale sketchy palms fan out across this rotary printed design. Choose from darker tones, dramatic and glamorous or the pared back colourways of Pewter, Chalk and Pebble.

Available in five colourways: Ink/Platinum, Jet/Gold, Oyster/Gold, Pebble/Chalk and Pewter/Chalk

LORENZA

Peek through sun-drenched palm leaves and see shards of shattered, silhouetted light layered on a softly coloured, metallic ground. Use this transitional design throughout the home or to create an elegant feature wall.

Available in four colourways: Platinum, Oyster, Chalk and Pewter

LLENYA

Reminiscent of tropical holidays, this structural bird of paradise design displays a bold, confident look and a lovely mix of matt and shine.

Available in five colourways: Ink/Coral/Seaglass, Honey/Slate/Jute, Lime/Jade/Pebble, Blush/Harbour/Gold and Jet/Stone/Gold

SHAMWARI

This striking modern toile was hand drawn in the Harlequin studio using a fine ink pen. Look carefully at the wonderfully detailed design and see zebras, leopards, giraffes, monkeys and a tiny parrot shaded by beautifully shaped trees.

Available in two colourways: Chalk/Slate and Chalk/Gold

NAKURU

A subtle take on an animal print, this wide-width textural design is printed on vinyl with a silk emboss giving a textural look across its range of contrasting colourways.

Available in five colourways: Oyster, Jute, Seaglass, Graphite and Chalk

LENGAU

Contrasting against a flat ground, a lounging leopard reclines on his throne of tropical foliage, flanked by a characterful chameleon and an endearing lemur. This amazing piece of artwork was hand painted in the Harlequin studio and displays metallic highlights against a flat contrasting ground.

Available in two colourways: Oyster and Slate

ANANDA

Hand drawn in pen and watercolour, this beautiful contemporary wallpaper is adorned with stylised tropical flowers. With its delicate painterly look and soft colour palette, intricate linework adds detail to this elegant design.

Available in five colourways: Pearl, Blush, Gold, Platinum and Topaz

NIRMALA

This dazzle of zebras brings its own unique style to contemporary interiors. Specialist inks emphasise the charming detail of the design, introducing a glamorous look to the home.

Available in four colourways: Silver/Oyster, Platinum/Chalk, Jet/Chalk and Chalk/Ebony

MIRADOR FABRICS

With a glorious, chilled-out vibe, Harlequin Mirador is an irresistible range of fabrics inspired by stunning panoramic vistas and the glamorous interiors of sun-kissed villas perched high upon Ibiza hills. Named after the Spanish word for 'lookout', Spanish and African influences come alive with eye-catching, inspirational designs, opening up a treasure trove of international style.

ALVARO

Reminiscent of palm trees swaying in the gentle breeze, Alvaro is a lovely painterly design that's digitally printed on a 100% cotton satin. The fresh, white ground contrasts beautifully with the subtle highlight tones of layered leaves, opening up a decorating story with the introduction of new colour.

Available in four colourways: Honey/Slate/Topaz, Lime/Jade/Palm, Harissa/Jute/Jet and Slate/Stone/Charcoal

ANANDA

Hand drawn in pen and watercolour, this beautiful contemporary fabric is adorned with stylised tropical flowers. Intricate linework adds detail to Ananda's sophisticated design which is printed on 100% cotton satin, with an elegant drape.

A matching wallpaper is also available.

Available in three colourways: Topaz, Oyster and Slate

LLENYA

Reminiscent of tropical holidays, this directional bird of paradise design displays a bold, painted feel. Printed on a cotton linen ground with a slub warp and weft, colourful highlights add detail to Llenya's flowers and buds.

A matching wallpaper is also available.

Available in four colourways: Honey/Jet/Jute, Cerise/Harbour/Saffron, Lime/Jade/Pebble and Ink/Coral/Pebble

SABI

Make a statement with Harlequin's take on an animal print, featuring layered paint textures on a cotton/linen cloth. Digitally printed, this versatile, small-scale fabric is perfect as a co-ordinating or standalone design across curtains, blinds and feature cushions.

Available in three colourways: Saffron, Seaglass and Oyster

HABANERA

Introduce a summery vibe with this all-over print of Ibiza inspired orchids, tropical leaves and palms. An excellent colour carrier, use Habanera as the main focus of a scheme, pulling out favourite colours and accessorising in complementary tones.

Available in two colourways: Cerise/Honey/Marine and Coral/Harbour/Lime

MEHARI

Inspired by the kilim rugs found in Ibiza homes, the embroidery of this truly beautiful fabric creates a bold geometric pattern across three captivating colourways, representative of the earth, forest and sky. Viscose thread contrasts with the design's cotton/linen base, shimmering incredibly subtly to show the directional stitch of the design.

Available in three colourways: Lime/Harbour/Stone, Harissa/Oyster/Charcoal and Sky/Maize/Charcoal

LORENZA

With an understated sheen across its satin ground, Lorenza is embroidered to represent the leaves of a palm, silhouetted against a sun-drenched ground. Available in a range of colours from dramatic to pared back, each colourway has a silky feel and glamorous look.

Available in four colourways: Saffron/Oyster, Ink/Seaglass, Honey/Jet and Oyster/Pearl

ZAMARRA

With its beautifully soft handle, zebra stripe influences triangulate on this fabulous, reversible fabric. Use Zamarra's two colourways independently or together to create a bold, interior statement.

Available in two colourways: Zebra and Saffron

KALIMBA

Tribal inspired shapes feature on this vertical geometric to create a striking drapery fabric. A wonderful colour carrier of contrasting shades, the design's viscose threads introduce a slight iridescence across the embroidery which contrasts with the natural ground.

Available in three colourways: Seaglass/Cerise/Indigo, Harissa/Jute/Harbour and Honey/Topaz/Slate

TURACO

This mid-scale jacquard looks like an embroidery with its all-over tribal pattern of placed shapes. Combine the drama of Onyx with the natural look of Pebble for a hybrid scheme.

Available in two colourways: Pebble and Onyx

NIRMALA

Nirmala's dazzle of zebras brings its own unique style to contemporary interiors. A woven jacquard with the appearance of embroidery, the charming textural detail of this design introduces a glamorous look to the home.

Available in two colourways: Zebra and Pebble

MIRADOR UPHOLSTERY

SAMBURU

With its inspiration taken from natural landscapes, this lovely mid-scale chevron design comes in four earthy tones. Woven in a cotton mix, Samburu is perfect for upholstery.

Available in four colourways: Charcoal, Jute, Harissa and Honey

MOREMI

A mid-scale geo of repeating chevrons and squares mingle to create this contemporary tile design. Woven in a cotton/viscose/linen mix and with an ikat edged look.

Available in four colourways: Jute, Zebra, Stone and Harbour

ELWANA

This absolute showstopper displays an array of mirrored, repeating shapes across a choice of light and dark grounds. Taking its inspiration from kilim rugs, Elwana's geometric pattern has a very subtle movement of colour and an ombre edge.

Available in four colourways: Charcoal/Slate/Stone, Onyx/Jute/Stone, Harissa/Ink/Jute and Cerise/Honey/Marine

ROSITA

Representing the view from an Ibiza hilltop villa, Rosita takes in the panoramic shades of the landscape and sunset below. A wonderful colour carrier with confident black and white stripes dispersed within, this fabric has a dry, natural feel.

Available in three colourways: Charcoal/Putty/Slate, Graphite/Harissa/Jute and Cerise/Ginger/Marine

SANARA

A small-scale geometric representative of roof tiles, this versatile go-with comes in four natural colourways.

Available in four colourways: Putty, Slate, Onyx and Indigo

BENIRRAS

A chunky upholstery print with a textured layered look, this painted collage effect takes its colours and patterns from the sun-bleached pottery found amongst landscaped Spanish gardens.

Available in three colourways: Harissa/Harbour/Jute, Marine/Cerise/Pebble and Slate/Stone/Honey.



IMAGE CAPTIONS

- 1 **WALLPAPER** L-R: Mitende 112228, Nirmala 112242, Shamwari 112244 **TABLE CLOTHS** B-F: Lorenza 133054, Sabi 120910, Turaco 133064 **CUSHIONS L-R:** Moremi 133074, Zamarra 133058, Zamarra 133059, Nirmala 133065 R (B-F) Lorenza 133054, Turaco 133064, Zamarra 133059, Benirras 120917
- 2 **SOFA:** Fission 440301 **CUSHIONS:** Kalimba 133060, Lorenza 133054, Llenya 120907, Zamarra 133059, Sanara 133089, Kalimba 133060, Llenya 120907, Zamarra 133059 Hand Held: Kalimba 133060
- 3 **WALLPAPER:** Llenya 112239 Seat pad: Rosita 133084 **CUSHIONS L-R:** Llenya 120907, Sanara 133089, Kalimba 133060, Turaco 133063, Lorenza 133054, Turaco 133063, Llenya 120907, Zamarra 133059, Turaco 133063
- 4 **WALLPAPER:** Llenya 112239 Seat pad: Rosita 133084 **CUSHIONS L-R:** Llenya 120907, Sanara 133089, Kalimba 133060, Turaco 133063, Lorenza 1330547
- 5 **SOFA:** Fission 440302 **THROW:** Lorenza 133054 **HAND HELD CUSHION:** Kalimba 133060
- 6 **WALLPAPER:** Llenya 112239 **SEAT PAD:** Rosita 133084 **CUSHIONS L-R:** Sanara 133086, Llenya 120907, Turaco, 133063, Lorenza 133054, Kalimba 133060, Turaco 133063, Llenya 120907
- 7 **CURTAINS:** Llenya 120917 **SOFA:** Samburu 133089 **CUBE:** Sanara 133089 **CUSHIONS L-R:** Lorenza 133055, Kalimba 133060, Nuru 131295, Kalimba 133060, Lorenza 133054, Llenya 120907, Lorenza 133055
- 8 **SOFA:** Samburu 133089 **CUSHIONS L-R:** Lorenza 133054, Llenya 120907, Lorenza 133055
- 9 **SOFA:** Samburu 133089 **CUSHIONS L-R:** Lorenza 133055, Kalimba 133060, Nuru 131295, Kalimba 133060, Lorenza 133054, Llenya 120907
- 10 **CURTAINS:** Llenya 120917 **SOFA:** Samburu 133089 **CUBE:** Sanara 133089 **CUSHIONS L-R:** Lorenza 133055, Kalimba 133060, Nuru 131295, Kalimba 133060, Lorenza 133054, Llenya 120907, Lorenza 133055
- 11 **Curtains:** Landscape Voiles 130953 **Wallpaper:** Shamwari 112243 **Sofa:** Fission 440305 **Chair:** Benirras 120917 **Chair cushions:** Kalimba 133062, Turaco 133063 **Cushions L-R:** Turaco 133064, Moremi 133074, Benirras 120917, Nirmala 133065, Nuru 131291, Turaco, 133064, Kalimba 133062, Turaco 133063
- 12 **CURTAINS:** Landscape Voiles 130953 **WALLPAPER:** Shamwari 112243 **SOFA:** Fission 440305 **CUSHIONS L-R:** Turaco 133064, Moremi 133074, Benirras 120917, Nirmala 133065
- 13 **SOFA:** Fission 440305 **CUSHIONS L-R:** Turaco 133064, Moremi 133074, Benirras 120917, Nirmala 133065
- 14 **WALLPAPER:** Shamwari 112243 **CHAIR:** Benirras 120917 **CUSHIONS:** Turaco 133062, Kalimba 133062
- 15 **WALLPAPER:** Lengau 112251 **SEA PAD:** Element 440319 **CUSHIONS L-R:** Turaco 133064, Turaco 133063, Benirras 120917, Sabi 120910, Nuru 131291, Turaco 133063, Kalimba 133062, Lorenza 133056
- 16 **WALLPAPER:** Lengau 112251 **CUSHIONS:** Turaco 133064
- 17 **WALLPAPER:** Lengau 112251 **SEAT PAD:** Element 440319 **CUSHIONS L-R:** Turaco 133064, Turaco 133063, Benirras 120917, Sabi 120910, Nuru 131291
- 18 **WALLPAPER:** Lengau 112251 **SEAT PAD:** Element 440319 **CUSHIONS L-R:** Turaco 133063, Benirras 120917, Sabi 120910, Nuru 131291
- 19 **WALLPAPER:** Lengau 112251 **SEAT PAD:** Element 440319 **CUSHIONS L-R:** Turaco 133063, Benirras 120917, Sabi 120910, Nuru 131291
- 20 **WALLPAPER:** Lorenza 112232 **CHAIR:** Fission 440305 **CUSHIONS L-R:** Benirras 120917, Moremi 133074
- 21 **WALLPAPER:** Lorenza 112232 **CHAIR:** Fission 440305 **CUSHIONS L-R:** Benirras 120917, Moremi 133074
- 22 **WALLPAPER:** Lorenza 112232
- 23 **WALLPAPER:** Nirmala 112242 **CUSHIONS L-R:** Zamarra 133058, Moremi 133073
- 24 **WALLPAPER:** Nirmala 112242 **CUSHIONS L-R:** Zamarra 133058, Moremi 133073
- 25 **WALLPAPER:** Nirmala 112242
- 26 **CURTAINS:** Zamarra 133058 **BLIND:** Sabi 120912 **SOFA:** Fission 440302 **CUBES:** Sanara 133085 **CUSHIONS L-R:** Turaco 133064, Zamara 133059, Zamarra 133058, Sabi 120912, Nirmala 133065, Lorenza 133054, Turaco 133064, Zamara 133059, Sabi 120912
- 27 **SOFA:** Samburu 133070 **CUSHIONS L-R:** Moremi 133074, Lorenza 133059, Elwana 133079
- 28 **SOFA:** Fission 440302 **CUSHIONS L-R:** Lorenza 133054, Turaco 133064, Zamara 133059, Sabi 120912
- 29 **CURTAINS:** Zamarra 133058 **SOFA:** Fission 440302 **CUSHIONS L-R:** Zamarra 133058, Zamarra 133059, Zamarra 133058, Zamarra 133059, Zamarra 133058
- 30 **CURTAINS:** Habanera 120914 **CUSHION:** Kalimba 133061
- 31 **CURTAINS:** Habanera 120914 **CUSHION:** Kalimba 133061
- 32 **CUSHIONS L-R:** Zamara 133059, Nirmala 133066
- 33 **CURTAINS:** Habanera 120914 **CUSHION:** Kalimba 133061
- 34 **CURTAINS:** Alvaro 120899 **WALLPAPER:** Nakuru 11249 **HEADBOARD:** Moremi 133075 **CUSHIONS L-R:** Turaco 133063, Kalimba 133062, Turaco 133064, Sabi 120910, Moremi 133075, Moremi 133074
- 35 **WALLPAPER:** Nakuru 11249 **HEADBOARD:** Moremi 133075 **CUSHIONS L-R:** Turaco 133063, Kalimba 133062, Turaco 133064, Sabi 120910, Moremi 133075, Moremi 133074
- 36 **CUSHIONS:** Florio 133457 (piped in Florio 133462), Turaco 133063, Moemi 133075, Florio 133457 (piped in Florio 133462)
- 37 **CURTAINS:** Alvaro 120899 **WALLPAPER:** Nakuru 112249 **CUSHIONS L-R:** Kalimba 133062, Turaco 133063
- 38 **WALLPAPER:** Nakuru 11249 **HEADBOARD:** Moremi 133075 **CUSHIONS L-R:** Turaco 133063, Kalimba 133062, Turaco 133064, Sabi 120910, Moremi 133075, Moremi 133074
- 39 **CUSHIONS L-R:** Turaco 133063, Kalimba 133062, Turaco 133064, Sabi 120910
- 40 **WALLPAPER:** Aranda 112235
- 41 **WALLPAPER:** Aranda 112235
- 42 **CURTAINS:** Ananda 120905
- 43 **CURTAINS:** Ananda 120905 **CUSHIONS L-R:** Sabi 120912, Turaco 133064
- 44 **WALLPAPER:** Mitende 112226
- 45 **SOFA:** Samburu 133070 **CUSHIONS L-R:** Florio 133457 piped in Florio 133462, Florio 133453, Lorenza 133055, Florio 133457 piped in Florio 133462
- 46 **WALLPAPER:** Mitende 112226
- 47 **CURTAINS:** Lorenza 133055 **WALLPAPER:** Nakura 112246 **CHAIR:** Elwana 133080 **CUSHIONS L-R:** Lorenza 133055, Sanara 133086
- 48 **SOFA:** Fission 440302 **CUSHIONS L-R:** Kalimba 133060, Lorenza 133054, Llenya 120907, Llenya 120907, Zamara 133059, Kalimba 133060
- 49 **CURTAINS:** Mehari 133052 **SOFA:** Fission 440305 **CUSHIONS L-R:** Kalimba 133061, Mehari 133052, Moremi 133075, Kalimba 133061, Sanara 133088, Kalimba 133061
- 50 **CURTAINS:** Mehari 133052 **SOFA:** Fission 440305 **CUSHIONS L-R:** Kalimba 133061, Mehari 133052, Moremi 133075
- 51 **CURTAINS:** Mehari 133052
- 52 **WALLPAPER L-R:** Mitende 112228, Nirmala 112242 **TABLE CLOTHS B-F:** Lorenza 133054, Sabi 120910, Turaco 133064 **CUSHIONS L-R: (B-F)** Moremi 133074, Zamarra 133058, Zamarra 133059, Nirmala 133065



49



50



51



CONTACT INFORMATION

For further information: www.stylelibrary.com/Harlequin
To find your nearest stockist: www.stylelibrary.com

PRESS OFFICE- SPREAD PR

Email: stephanie@spreadpr.net

Tel: +212 696 0006

USA STYLE LIBRARY SHOWROOM

D&D Building

979 Third Avenue, Suite 409

New York, NY 10022

Tel: +1 212 319 7220

Email: salesny@stylelibrary.com

USA STYLE LIBRARY OFFICE

800 Huyler Street

Teterboro, New Jersey 07608

Tel: +1 201 399 0500

Fax: +1 201 399 0501

Email: questions@stylelibrary.com

HARLEQUIN