



introducing
ELEMENTS
featuring Crypton Home®

THIBAUT

INDOOR PERFORMANCE FABRIC



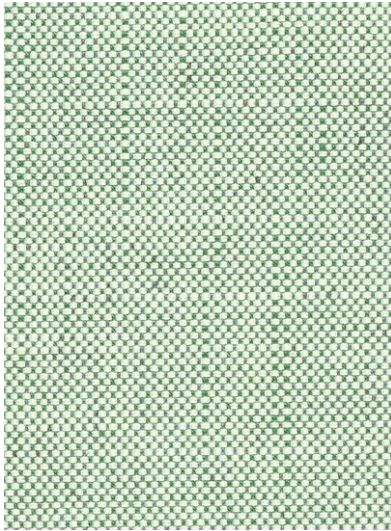
Elements fabric

Introducing Elements, Thibaut's new indoor performance offering of Crypton Home® fabrics inspired by the natural elements of the earth. This collection is comprised of 6 small-scale textures that provide a soothing wash of color from a distance yet are visually interesting and rewarding up-close. Enjoy wovens that are serene and symbolic of nature's beauty in the purest form, from stratus clouds and northern lights to dunes and cascading waterfalls. Elements has been expertly designed utilizing multi-tonal yarns, making them versatile as ideal coordinates across our vast library of patterns and color schemes. A collection of soft staples with long color lines that are stylish and made for family living. Each of the 70 SKUs exceeds 50,000 double rubs and has the assurance of Crypton Home technology providing durable fabrics with a luxurious feel.

the
ELEMENTS
collection



Elements Patterns



AMBIENT

This timeless, linen-like texture is a welcoming fabric with a soft hand. Ambient exudes a calming ambiance and is available in a wide array of colors.

Woven Fabric-14 colorways

Content: 83% Polyester, 13% Rayon, 4% Linen, Acrylic Backed, Crypton Home Finish
Width: 54" (137 cm)
Made In USA



BOREALIS

Borealis is a stunning woven fabric with a long color line. There are 9 colorways in all, taking inspiration from the multi-dimensional brilliance of the Aurora Borealis Northern Lights.

Woven Fabric-9 colorways

Content: 59% Cotton, 85% Polyester, Acrylic Backed, Crypton Home Finish
Width: 54" (137 cm)
Made In USA



CASCADE

Cascade makes waves with a subtle basket weave design, creating a meditative quality with movement. Drawing on inspiration of a cascading waterfall formed when a river or stream flows over a precipice or ledge, this is the longest color line with 18 colorways.

Woven Fabric-18 colorways

Content: 93% Polyester, 7% Cotton, Acrylic Backed, Crypton Home Finish
Width: 54" (137 cm)
Made In USA

Ambient fabrics



Montclair Chair in Cascade





When you want the widest array of color and a variety of looks, we recommend Crypton Home fabric for indoor use.



30,000-100,000
DOUBLE RUBS



REPELS
SOIL & STAIN



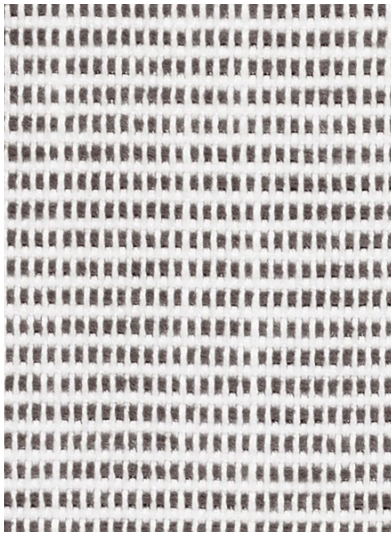
INCLUDES
NATURAL FIBERS



clockwise from top left: Alexander Chair in Borealis. Morgan Chair in Cascade. Hudson Chair in Elements. Everett Chair in Ambient.



Elements Patterns

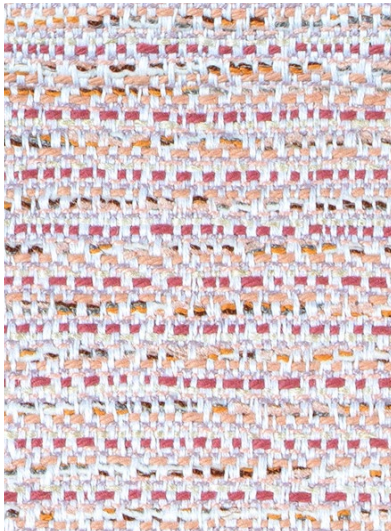


DUNE

Dune is named after the natural hills that are formed by wind or sand, commonly found in a beach or desert. The hand of the chenille is soft and luxurious with a soothing ripple design evocative of ocean waves.

Woven Fabric–11 colorways

Content: 85% Polyester, 8% Cotton,
7% Rayon, Acrylic Backed,
Crypton Home Finish
Width: 54" (137 cm)
Made In USA

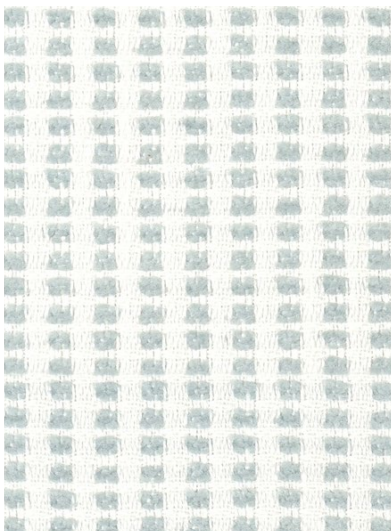


ELEMENTS

Comparable to a timeless tweed that never goes out of fashion, our Elements fabric emulates a handwoven texture and highlights the beauty of multi-tonal colorways.

Woven Fabric–12 colorways

Content: 68% Polyester, 24% Cotton,
8% Rayon, Acrylic Backed,
Crypton Home Finish
Width: 54" (137 cm)
Made In USA



STRATUS

Stratus clouds tend to be low in altitude and cover the sky in a blanket of white. This geometric woven is lush with open white ground and a plush hand, evocative to the comforting feeling of watching clouds pass by. Available in light tones, reminiscent to the sky.

Woven Fabric–6 colorways

Content: 51% Cotton, 68% Polyester,
Acrylic Backed, Crypton Home Finish
Width: 53" (135 cm)
Made In USA

Westwood Chair in Stratus









Tested and Trusted

Superior Stain Repellency–Easy to Clean

- Liquid spills bead up and can be wicked away from the surface with a dry towel.
- Most stains are easy to clean with household soap (like Tide® or Dawn®) and water. Rinse well.
- For annual maintenance or difficult stains, we recommend professional cleaning.

Residential Look and Feel with Natural Fibers

- Thibaut’s Crypton Home fabrics offer an array of colors in your favorite yarns such as cotton, linen and rayon.
- Choices are not limited to the use of a single fiber, unlike many performance fabrics.
- Crypton Home technology enhances performance attributes without sacrificing the unique characteristics of the fiber. Fabric stays soft, supple and breathable.

Environmentally Friendly, Made in the USA

- Research and patented formulations are manufactured without harsh chemicals in an environmentally responsible facility in North Carolina. The Green Guard Gold® certification means these fabrics are low-emitting interior products.

Designed for Upholstery with Long-Lasting Durability

- Crypton Home technology is inherent to the construction and development of each fabric.
- Thibaut’s Crypton Home fabrics pass rigorous tests for heavy-duty indoor upholstery use.
- Most patterns meet or exceed 30,000 Wyzenbeek double rubs.
- Thoroughly tested across pilling, strength, stain resistance and flammability (California TB117-2013).

We Make Upholstery Easy

- Thibaut trusts Crypton Home technology for fabric and furniture as it meets heavy-duty upholstery standards while retaining a residential look. Thibaut brings a designer perspective to the technology and incorporates high-quality yarns that are densely packed, resulting in a soft and luxurious feel.
- The development, manufacturing and testing of all Crypton Home fabric occurs under one roof ensuring quality and accountability.
- As a result, Thibaut’s Crypton Home fabrics present a complete solution. They are ready for upholstery without the expense, hassle and risk of additional finishes or backing.



THIBAUT®

WALLPAPER FABRIC FURNITURE