



introducing
MESA

THIBAUT®

Wide open spaces, welcome and warm



MOAB WEAVE WALLCOVERING

Mesa introduces 115 styles inspired by extraordinary periods of craftsmanship in South America, Central America, Central Asia and the Middle East during the 19th century. It was truly a moment when artisans mastered textile techniques and designs of antiquity like Suzani, Kilim, and Block Printing. We stand on the shoulders of giants and honor them with patterns referencing antique documents or hand-woven fabrics from this time. Mesa launches an earthy color palette of wallpaper and fabric in sunbaked colors that add warmth and depth to a room.

the
MESA
collection

Mesa Patterns



HIGH PLAINS

High Plains is a textured pattern with endless layers of shapes and lines, adapted from an ancient document of a hand-woven fabric from the mountains of Peru.

Wallpaper—6 colorways

Print Type: Screen Print

Match: Straight

Width: 27" (69 cm)

Vertical Repeat: 18" (46 cm)

Made In USA

Printed Fabric—6 colorways

Content: 100% Linen

Width: 54" (137 cm)

Vertical Repeat: 20" (51 cm)

Horizontal Repeat: 27" (69 cm)

Made In UK



LEWIS

This other worldly print was inspired by 19th century hand embroidered Suzani patterns. These were prized possessions of the nomadic tribes in Tajikistan, Uzbekistan and Kazakhstan who were valued for their beautiful decoration and fine craftsmanship.

Wallpaper—7 colorways

Print Type: Digital Print on Non Woven

Match: Straight

Width: 27" (69 cm)

Vertical Repeat: 48½" (123 cm)

Made In USA

Printed Fabric—7 colorways

Content: 60% Linen, 30% Cotton,
10% Nylon

Width: 54" (137 cm)

Vertical Repeat: 48½" (123 cm)

Horizontal Repeat: 27" (69 cm)

Made In Thailand



LILY FLOWER

Lily Flower is based upon an 18th century Indienne floral sprig. The pattern appears loosely drawn and organic as the design would have originally been produced by hand block, using madder dyes to outline the flower and hand paint to color the leaves.

Wallpaper—7 colorways

Print Type: Screen Print

Match: Quarter Drop

Width: 27" (69 cm)

Vertical Repeat: 36" (91 cm)

Made In USA

Printed Fabric—7 colorways

Content: 100% Linen

Width: 54" (137 cm)

Vertical Repeat: 28" (71 cm)

Horizontal Repeat: 18" (46 cm)

Made In Thailand



LILY FLOWER WALLPAPER & FABRIC
Mayfair Chairs in Tiburon



LEWIS WALLPAPER & FABRIC
Lauderdale Chair in
Cascade from Elements

Mesa Patterns



TIBURON

The perfectly scaled linear design of Tiburon gives a hand-crafted geometric illusion. This pattern is inspired by an ancient batik textile which illustrates dual-facing triangles inset into diamonds.

Wallpaper—7 colorways

Print Type: Screen Print

Match: Straight

Width: 27" (69 cm)

Vertical Repeat: 12 $\frac{5}{8}$ " (32 cm)

Made In USA

Printed Fabric—7 colorways

Content: 100% Cotton

Width: 54" (137 cm)

Vertical Repeat: 12 $\frac{5}{8}$ " (32 cm)

Horizontal Repeat: 13 $\frac{1}{2}$ " (34 cm)

Made In USA



TULUM

TULUM APPLIQUÉ

Inspired by Aztec designs, Tulum is a large-scale pattern that makes an impact through simple shapes and forms. The appliqué is hand sewn on fabric with stitching detail around the border.

Wallpaper—6 colorways

Print Type: Screen Print

Match: Straight

Width: 27" (69 cm)

Vertical Repeat: 12 $\frac{5}{8}$ " (32 cm)

Made In USA

Woven Fabric—6 colorways

Content: 61% Linen, 38% Wool,
1% Viscose

Width: 52" (132 cm)

Vertical Repeat: 11 $\frac{1}{2}$ " (29 cm)

Horizontal Repeat: 25 $\frac{1}{4}$ " (64 cm)

Made In India



AUSTIN DIAMOND

The free-flowing lines in the diamond leaf present a fresh interpretation of an ancient Javanese batik textile.

Wallpaper—7 colorways

Print Type: Screen Print

Match: Straight

Width: 27" (69 cm)

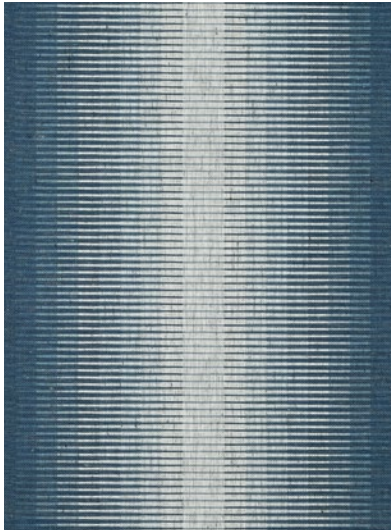
Vertical Repeat: 6 $\frac{1}{4}$ " (16 cm)

Made In USA



TULUM WALLPAPER
Saybrook Chair in Tulum Appliqué

Mesa Patterns



BOZEMAN STRIPE

Bozeman Stripe is a dramatic multi-tonal pattern that creates a feast for the senses. The wide ombre stripe is complimented with a linen web on top.

Wallcovering—5 colorways

Print Type: Gravure on Non Woven
with mesh overlay

Match: Straight

Vertical Repeat: 1/4" (.6 cm)

Width: 36" (91 cm)

Made In South Korea



MARLBOROUGH DOWNS

The Marlborough Downs wallpaper is a novelty design, adapted from a book about the peculiar horses that were carved on the Marlborough Downs in England during AD 800.

Wallpaper—5 colorways

Print Type: Screen Print

Match: Straight

Vertical Repeat: 25 1/4" (64 cm)

Width: 27" (69 cm)

Made In USA



MOAB WEAVE

A captivating horizontal zig zag pattern in sunbaked colors. The wallcovering was printed with a linen weave, providing texture to walls that paint cannot achieve.

Wallcovering—5 colorways

Print Type: Gravure on Non Woven
with mesh overlay

Match: Straight

Vertical Repeat: 7 1/2" (19 cm)

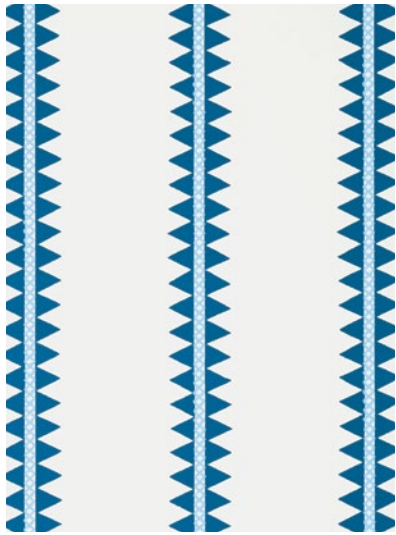
Width: 36" (91 cm)

Made In South Korea

RENO STRIPE EMBROIDERY
Reno Stripe wallpaper



Mesa Patterns



RENO STRIPE

A western wallpaper that is the perfect mid-size scale, Reno Stripe is bold and colorful, yet has plenty of negative space. The cross-stitching was loosely drawn to resemble the hand embroidered detail on its coordinating fabric, Reno Stripe Embroidery.

Wallpaper—7 colorways

Print Type: Screen Print

Match: Straight

Width: 27" (69 cm)

Vertical Repeat: 12 $\frac{5}{8}$ " (32 cm)

Made In USA



AUSTIN

Austin fabric unites small and large-scale patterns in perfect harmony. The leaf shaped diamond is positioned between embroidered borders, adding another layer of dimension and color.

Printed Fabric—6 colorways

Content: 100% Linen

Width: 54" (137 cm)

Vertical Repeat: 5 $\frac{3}{4}$ " (15 cm)

Horizontal Repeat: 13 $\frac{1}{2}$ " (34 cm)

Made In Italy



RENO STRIPE EMBROIDERY

Reno Stripe Embroidery has an American Indian style that transports you out west. The fabric highlights embroidery done by hand with contrast cross stitching throughout.

Woven Fabric—7 colorways

Content: 54% Cotton, 36% Linen,
10% Spun Polyester

Width: 54" (137 cm)

Vertical Repeat: 1" (2.5 cm)

Horizontal Repeat: 3 $\frac{1}{4}$ " (8 cm)

Made In India



AUSTIN FABRIC &
AUSTIN DIAMOND WALLPAPER
Ridgewood Headboard in Lily Flower
Pillows in Tiburon

Mesa Patterns



RIO GRANDE

Based on a traditional Anatolian kilim which were hand woven using course counts of yarn, Rio Grande is abstract in shape and features a rich weave on heavy fabric.

Printed Fabric-7 colorways

Content: 100% Cotton

Width: 54" (137 cm)

Vertical Repeat: 42" (107 cm)

Horizontal Repeat: 54" (137 cm)

Made In Thailand



BOZEMAN STRIPE WALLCOVERING
Dixon Sofa with Buttons in Rio Grande
Pillow in Tulum Appliqué
Draperies in Almond from Prisma with
contrast trim in Reno Stripe Embroidery

THIBAUT®

WALLPAPER FABRIC FURNITURE