

*introducing*  
NATURAL RESOURCE  
VOLUME 3

THIBAUT®

# The beauty of nature surrounds you



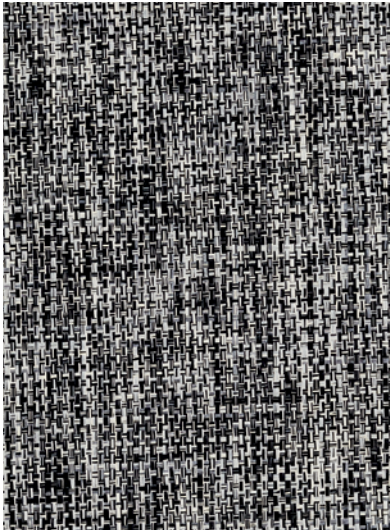
*Pima Braid wallcovering*

Natural Resource Volume 3 is full of specialty wallcoverings meticulously crafted with wonderfully natural fibers and materials that are unique and tactile. Exotic and glamorous yet handcrafted in nature, these refined designs instantly elevate with sustainable style. This collection of natural wallcoverings is effortlessly elegant while organic and approachable.

## NATURAL RESOURCE

VOLUME 3

# Natural Resource Vol. 3 Patterns



## ARTHUR'S TWEED

Named after King Arthur of Scotland where tweed originated, Arthur's Tweed is a marvelous menswear-inspired paperweave that is woven to look like tweed. It is polished with a hint of ruggedness.

### 6 colorways

Paperweave–Non Woven Backing  
Match: Random  
Width: 36" (91 cm)  
Made in South Korea



## ENCINITAS

Encinitas is a specialty wallcovering authentically made with dried banana stem. The fibers are printed with ink and cut into planks creating a distinctive paneled effect.

### 2 colorways

Banana Stem–Non Woven Backing  
Match: Random  
Width: 36" (91 cm)  
Made in South Korea



## CAPE MAY WEAVE

An open, textured weave of natural raffia and paper, this wallcovering is perfectly imperfect, subtle tonal variations that give it its distinctive texture and beauty.

### 10 colorways

Raffia–Non Woven Backing  
Match: Random  
Width: 36" (91 cm)  
Made in South Korea



**ARTHUR'S TWEED**

*Monterey Wing Chair in Riff Velvet & Pillow in Bossa Nova Velvet  
from Woven Resource Vol. 13: Fusion Velvets  
Sheers in Parker Plaid from Atmosphere*

CAPE MAY WEAVE

Bamboo Metal Console Customized with 2 Drawers  
in Calistoga from Grasscloth Resource Vol. 5





ENCINITAS  
*Carson Chairs in Bristol from  
Landmark Textures*

# Natural Resource Vol. 3 Patterns



## CORDOZA WEAVE

A mosaic pattern made with carefully cut geometric pieces of raffia that are placed on metallic ground.

### 3 colorways

Raffia–Non Woven Backing  
Match: Straight  
Vertical Repeat: 3½" (9 cm)  
Width: 36" (91 cm)  
Made in South Korea



## WILDFLOWER

A large-scale botanical with a soothing design, Wildflower's pattern is printed with fine sisal placed on top to add a softened effect.

### 4 colorways

Sisal–Non Woven Backing  
Match: Straight  
Vertical Repeat: 27" (69 cm)  
Width: 36" (91 cm)  
Made in South Korea



## HIDDEN HILLS

A modernized scalloped geometric pattern of alternating colors, with a linen mesh overlay on top.

### 4 colorways

Linen Mesh–Non Woven Backing  
Match: Straight  
Vertical Repeat: 3" (8 cm)  
Width: 36" (91 cm)  
Made in South Korea

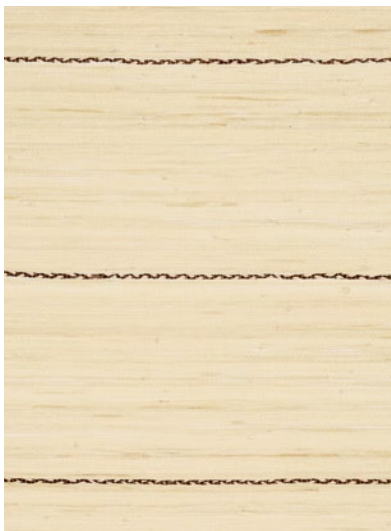


HIDDEN HILLS  
Darren Chairs in Freeport from Festival





# Natural Resource Vol. 3 Patterns



## NAVAJO

Navajo is a woven raffia wallcovering with an added fine braid accent placed horizontally every 7 inches.

### 4 colorways

Raffia–Non Woven Backing  
Match: Random  
Width: 36" (91 cm)  
Made in South Korea



## SAVANNA

Named after the savannas of Africa where wild zebras roam, this pattern is influenced from their stripes but modernized into a geometric that is printed on a vertical paperweave.

### 6 colorways

Paperweave–Non Woven Backing  
Match: Straight  
Vertical Repeat: 30" (76 cm)  
Width: 36" (91 cm)  
Made in South Korea



## PIMA BRAID

Hand-braided strips from dried palm leaves are then cut into 12" panels and mounted on non-woven paper. The Natural color is the original state of the dried palm leaves, the Straw and Grey colorways are dip-dyed.

### 3 colorways

Braided Palm Leaf–Non Woven Backing  
Match: Random  
Width: 36" (91 cm)  
Made in South Korea



SAVANNA

*Sterling Chairs in Freeport from Festival  
with contrast welt & buttons in Bristol from  
Landmark Textures*



# Natural Resource Vol. 3 Patterns



## **POINT LOBOS**

Point Lobos is a hypnotizing geometric pattern with a slightly bohemian look printed on a paperweave ground.

### **4 colorways**

Paperweave-Non Woven Backing

Match: Straight

Vertical Repeat: 30" (76 cm)

Width: 36" (91 cm)

Made in South Korea

THIBAUT®

WALLPAPER FABRIC FURNITURE