

ZOFFANY

AKAISHI WALLCOVERINGS,
EDO FABRICS & BRAIDS,
BIRODO VELVETS



PRESS RELEASE JANUARY 2016

ZOFFANY.COM



ZOFFANY

AKAISHI WALLCOVERINGS,
EDO FABRICS & BRAIDS, BIRODO VELVETS

Inspired by Japanese design ethos and culture, the Zoffany spring 2016 collection is a breathtaking interpretation of the natural world around us. An ethereal aesthetic emanates from the artwork which was created by spontaneous and painterly brush strokes.

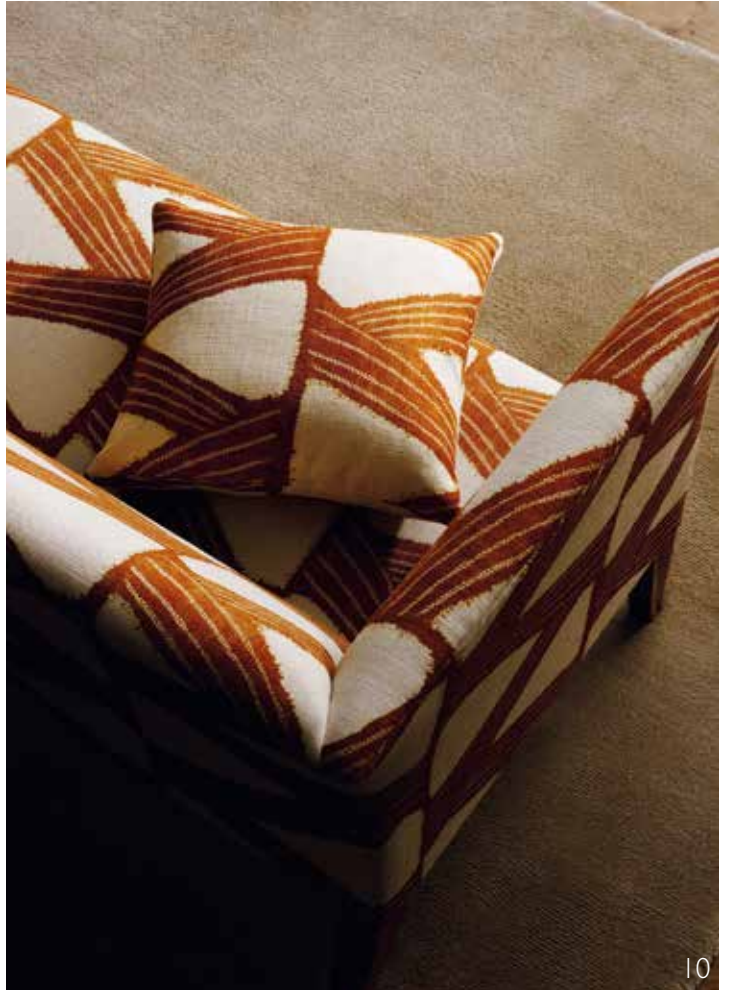
AKAISHI WALLCOVERINGS heralds an exciting new chapter of wallpaper creation for Zoffany, introducing fabric on walls! Textural patterns are woven as jacquards, paper-backed, and in some cases, digitally printed. Innovation, through layering of substrates and techniques, creates fabulously atmospheric wallcoverings which add a sophisticated zen-like ambiance to the interior space they adorn.

The EDO FABRICS & BRAIDS collection is the epitomé of fine craftsmanship; watercolour prints on natural linens, lightweight silk qualities and delicate embroideries are augmented by exquisite decorative wide-width braids. The sumptuous velvet, BIRODO, completes the offer.

An organic mineral colour palette infuses the collection with a range of natural earthy colours that are accentuated with moody and ambient hues.



















AKAISHI WALLCOVERINGS

The collection comprises a mix of conventional wallpapers and paper backed fabrics.

THE PAPER BACKED FABRICS

The secret behind these serene and effortless wallcoverings is a stunning synthesis of innovation and expertise. The time honoured skills of jacquard weaving are combined with wallpaper printing to dramatic effect. The studio has worked with multiple producers and processes to achieve a totally unique product.

AKAISHI – inspired by the Southern Japanese Alps, an abstract pattern of mountains is woven across the fabric to create a stunning and innovative textural wallcovering.

RUSHES - has been woven to emulate grass cloth, a refined twist of colour running through it adds great movement.

ACER – a delicate painterly trail of acers is digitally printed onto the laminated jacquard base cloth of **RUSHES**.

SANSUI – this spectacular skyscape of celestial quality was painted to scale using large brushes and combining various paint techniques. One colourway is printed onto the grass cloth base; two further colourways exist as wide-width scenic wallpaper.

All of the above wallcoverings are extra wide width and sold by the metre.

THE WALLPAPERS

ATMOSFERA - is reminiscent of a waterfall cascading down a mountain. This rich and complex ombré stripe evokes the sense of water and reflection.

RAW SILK – Emulating natural silk wall-hangings, **RAW SILK** takes Zoffany's **SILK PLAIN** to a new dimension. Additional texture and depth of colour are added through rotary screen printing which creates a chalkier and textural dense ink mark.

CRACKED EARTH – The artwork for this organic earth effect pattern was created using crackle inks. The six colourways of this crisp, contemporary design are inspired by landscapes from around the world; from the Gobi desert and salt plains, to the Sahara.

SUMINAGASHI - which translates as 'floating ink' is inspired by an original document from the Zoffany archive. This pattern of natural ripples of water is representative of the ancient Japanese art of marbling plain paper with water and ink.

WILLOW SONG – a painterly impression of a Japanese weeping willow is printed onto a textural ground, reminiscent of time-worn plaster.

Derived from the successful **LUSTRE TILE**, **ASHLAR TILE** is created by the layering up of chalky inks, permeated with fine sand to give the tactile effect of stonework.

EDO FABRICS AND BRAIDS

WATER IRIS - Inspired by nature, this abstracted water lily was created with painterly brush strokes, leaving no hard edges. The layering of watercolours on the cloth creates a lovely sense of movement.

KANOKO - This meandering graphic zig zag motif is inspired by a 1930's Japanese Shibori document from the Zoffany archive, once a kimono. Shibori is a traditional Japanese batik type technique which involves binding certain sections of the cloth to achieve the desired pattern.

ATMOSFERA - A complex ombré stripe, **ATMOSFERA** is reminiscent of a waterfall as it cascades down a mountain. Digitally printed to retain the soft vertical movement and twists of colour of the original artwork, the herringbone construction of the wide width cloth combines slightly metallic yarns with linens to evoke the sense of water and reflection. **ATMOSFERA** is a 3m wide fabric.

ACER - This exquisite design has been created by layering three very different techniques; weave, embroidery and print. A trail of acers, otherwise known as Japanese maple, were painted out by Lorraine Kerr in the studio and then printed onto a beautiful silk and linen quality. Abstract chrysanthemum heads are then embroidered over the top as if randomly falling on the leaves. Multi-directional stitching creates the delicate filigree which catches the light.

CIRRUS EMBROIDERY - Cirrus is a type of wispy cloud. Fine sketch-like embroidery covers the whole surface of a delicate linen mix cloth to create a sense of abstract cloud formations. Multi-directional stitching plays with the light delightfully.

CREASE - This sophisticated semi-plain is reminiscent of the craft of origami. The illusion of creases is created using contrast matt and shine yarns.

MOON SILK - Capturing the drama and movement of a moonlit sky, the original artwork for this design was created using pastels; highly pigmented colours were put down in layers and then sanded to create a textural ground. **MOON SILK** is woven using fil-coupé technique, the fine warp and yarns retain a lightness of handle which drapes beautifully.

KOBUSHI MAGNOLIA - Kobushi is a type of magnolia indigenous to Japan. This lustrous jacquard quality captures the nuances of tone from the original artwork which was originally painted out in watercolours.

THE BRAIDS

The ultimate sophisticated decorative embellishment, these smart contemporary braids augment the fabulous Zoffany plains such as **LUSTRE** and **BRAY LINENS** in colour palettes that complement the decorative prints and embroideries of the **EDO** fabrics collection.

IKAT BRAID – inspired by **KASHI** from the **WINTERBOURNE** collection, this wide multi-coloured braid takes a section out of a traditional ikat and deconstructs it. It is embroidered on a fine ottoman ground.

MARBLE BRAID – a fluid abstract pattern embroidered on dark grounds, created using marbling techniques.

CRACKLE BRAID – light reflective yarns are embroidered on dark intense grounds creating a crackle effect.

ZIG ZAG BRAID - takes its influence from **KANOKO** to create a contemporary meandering zig zag, a fabulous finish to a curtain edge.

BIRODO VELVET

BIRODO means velvet in Japanese. This smart, textural velvet has a slubby cotton yarn which creates a two dimensional strié through a crisp dense pile. The range of sixteen colours is inspired by polished stones and includes an extensive range of neutrals interspersed with intensely bright highlight colours.

IMAGE CAPTIONS

COVER WALLPAPER: ATMOSFERA 312506
LAMP: ZOFFANY COLMEA COPPER CHAIR:
 INNER: BIRODO VELVET 332415 OUTER: TESPI
 SQUARE 332180 CUSHION: ATMOSFERA 332452
 1 WALLPAPER: ATMOSFERA 312506 LAMP:
 ZOFFANY COLMEA COPPER 2 CURTAINS:
 ATMOSFERA 332451 PAINT: SILVER CHAIR:
 CREASE 332454 THROW: CIRRUS EMBROIDERY
 332444 CUSHION: ATMOSFERA 332451 BACKED
 IN: LUSTRE 332207 LAMP: ZOFFANY CAIUS
 CHAMPAGNE 3 CHAIR: CREASE 332454 THROW:
 CIRRUS EMBROIDERY 332444 CUSHION:
 ATMOSFERA 332451 4 WALLPAPER: ASHLAR
 TILE 312541 5 CURTAINS: ATMOSFERA 332451
CHAIR: CREASE 332454 CUSHION: ATMOSFERA
 332451 PAINT: SILVER LAMP: ZOFFANY CAIUS
 CHAMPAGNE 6 WALLPAPER: ASHLAR TILE 312541
LAMP: ZOFFANY NOVELLA ANTIQUE BRONZE
 7 WALLPAPER: RUSHES 312490 CURTAIN: WATER
 IRIS 322433 SOFA: LUSTRE 332197 CUSHION:
 CIRRUS EMBROIDERY 332446 CHAIR: MICA
 MICO1017 CUSHION: WATER IRIS 322433 LAMP:
 ZOFFANY NAIAD AMBER 8 WALLPAPER: AKAISHI
 312498 SOFA: KANOKO 322438 THROW:
 CIRRUS EMBROIDERY 332446 CUSHIONS:
 KANOKO 322438, CIRRUS EMBROIDERY 332446
 9 CURTAIN: WATER IRIS 322433 CHAIR: MICA
 MICO1017 CUSHION: WATER IRIS 322433 10
SOFA: KANOKO 322438 CUSHION: KANOKO
 322438 RUG: ZOFFANY FLAX 11 WALLPAPER:
 ACER 312496 CHAIR: BIRODO 332419 PAINT:
 FOSSIL 12 WALLPAPER: ACER 312496 13 THROW
 & CUSHION: CIRRUS EMBROIDERY 332446 14
WALLPAPER: ACER 312496 CHAIR: BIRODO
 332419 15 WALLPAPER: ACER 312496, RUSHES
 312490 16 WALLPAPER: WILLOW SONG 312535
CHAIRS: BIRODO VELVET 332421 CUSHIONS:
 TESPI SQUARE 332175 RUG: ZOFFANY PEWTER
LAMP: ZOFFANY NOVELLA BRONZE 17
WALLPAPER: WILLOW SONG 312535 LAMP:
 ZOFFANY NOVELLA BRONZE 18 WALLPAPER:
 WILLOW SONG 312535 CHAIRS: BIRODO
 VELVET 332421 CUSHIONS: TESPI SQUARE
 332175 RUG: ZOFFANY PEWTER 19 CHAIR:
 LUSTRE 332299 TRIMMED IN: MARBLE BRAID
 332471 THROW: LUSTRE 332299 RUG: ZOFFANY
 FLAX 20 CURTAINS: KOBUSHI MAGNOLIA
 322462 PAINT: SILVER LAMP: ZOFFANY CAIUS
 CHAMPAGNE 21 WALLPAPER: RAW SILK 312520
 22 WALLPAPER: SANSUI 312504 23 WALLPAPER:
 ASHLAR TILE 312541 CHAIR: LUSTRE 332299
 TRIMMED IN: MARBLE BRAID 332471 THROW:
 CIRRUS EMBROIDERY 332444 CUSHION:
 MOON SILK 332458 RUG: ZOFFANY FLAX 24
WALLPAPER: SANSUI 312504 SOFA: LUSTRE
 332200 TRIMMED WITH MARBLE BRAID 332471
LAMP: ZOFFANY NAIAD GLASS 25 WALLPAPER:
 ASHLAR TILE 312541 26 WALLPAPER: SANSUI
 312504 27 WALLPAPER: CRACKED EARTH 312529
CHAIR: ORESTE 331206 LAMP: ZOFFANY NAIAD

SMOKE 28 WALLPAPER: RAW SILK 312520
CURTAINS: ACER 332440 SOFA: BIRODO 332420
FOOTSTOOL: LUSTRE 332294 CUSHIONS:
 WATER IRIS 322432, ACER 332440, BIRODO
 332420 TRIMMED WITH IKAT BRAID 332466
THROW: BIRODO 332415 TRIMMED WITH
 ZIG ZAG BRAID 332469 LAMP: ZOFFANY
 MAZU GRAPHITE 29 WALLPAPER: CRACKED
 EARTH 312529 CHAIR: ORESTE 331206 PAINT:
 VICTORIAN PURPLE LAMP: ZOFFANY NAIAD
 SMOKE 30 FABRIC: WATER IRIS 322431 31
WALLPAPER: SUMINAGASHI 312538 CURTAINS:
 LUSTRE 332193 TRIMMED WITH ZIG ZAG BRAID
 332467 SOFA: LUSTRE 332200 TRIMMED WITH
 MARBLE BRAID 332471 CUSHION: LUSTRE
 332200 TRIMMED WITH IKAT BRAID 332464
RUG: ZOFFANY MUSHROOM 32 TRIMMINGS:
 ZIG ZAG BRAID 332469 MARBLE BRAID 332473,
 IKAT BRAID 332466 33 CRACKLE BRAID 332474
 34 CURTAIN: WATER IRIS 322433 WALLPAPER:
 RUSHES 312490, ACER 312496 MARBLE BRAID
 332473 35 ATMOSFERA 332451 36 CUSHION:
 ACER 332440 37 WALLPAPER: CRACKED EARTH
 312529 WILLOW SONG 312535 38, 39 CURTAINS:
 MOON SILK 332460 PAINT: SILVER CHAIR:
 QUARTZ VELVET 331619 THROW: BIRODO
 332415 CUSHION: KOBUSHI MAGNOLIA 322462
LAMP: ZOFFANY FIAMETTA SMOKE BLUE 40
WALLPAPER: SUMINAGASHI 312538 CHAIR:
 LUSTRE 332299 CUSHION: MOON SILK 332458



FOR FURTHER INFORMATION, IMAGES, OR
PRODUCT REQUESTS PLEASE CONTACT

ZOFFANY PRESS OFFICE

CHALFONT HOUSE, OXFORD ROAD, DENHAM,
BUCKINGHAMSHIRE, UB9 4DX, UK
TEL: 01895 221005
EXPORT TEL: +44(0)1895 221001
EMAIL: PRESS@ZOFFANY.CO.UK

ZOFFANY.COM



38



39



40