



CARLISLE & CO.™

WALLCOVERINGS

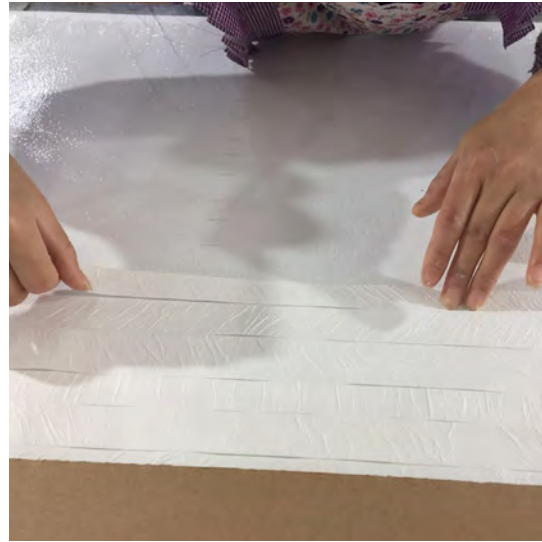
— EST. 1998 —

SPRING 2021 LAUNCH

ABOUT
CARLISLE & CO.

A collection of innovative and artisanal wallcoverings
exclusively distributed by Holly Hunt.

INNOVATION & ARTISTRY



HANDCRAFTED

DIGITAL PRINTS

HIGH PERFORMANCE VINYL

NATURALS

SIGNATURE PRINTS

TEXTILES



PLISSÉ

This luxurious wallcovering is crafted with delicate folds and accented with hand-applied shimmering metallics.

A mineral inspired palette adds quiet, sophisticated depth of color.

HANDCRAFTED

PLISSÉ



SPECIFICATIONS

WIDTH: 36" (91,4 cm) Trimmed

REPEAT: None

BACKING: Non-Woven

FLAME RATING: ASTM E84 Class A

BOLT SIZE: 8 yd (7,32 m)

MATCH: Random

MINIMUM ORDER: 8 yd (7,32 m)

MAINTENANCE: Soft Dry Brush

8 colorways; \$28.00 per yard / € 27.00 per meter

PLISSÉ



LX1575 - Platinum



LX1576 - Soft Silver



LX1577 - Onyx



LX1578 - Taupe



LX1579 - Fog



LX1580 - Dove



LX1581 - Steel Blue



LX1582 - Twilight

Click on patterns above to download tearsheet.

[DOWNLOAD ASSETS](#)

SOLITAIRE

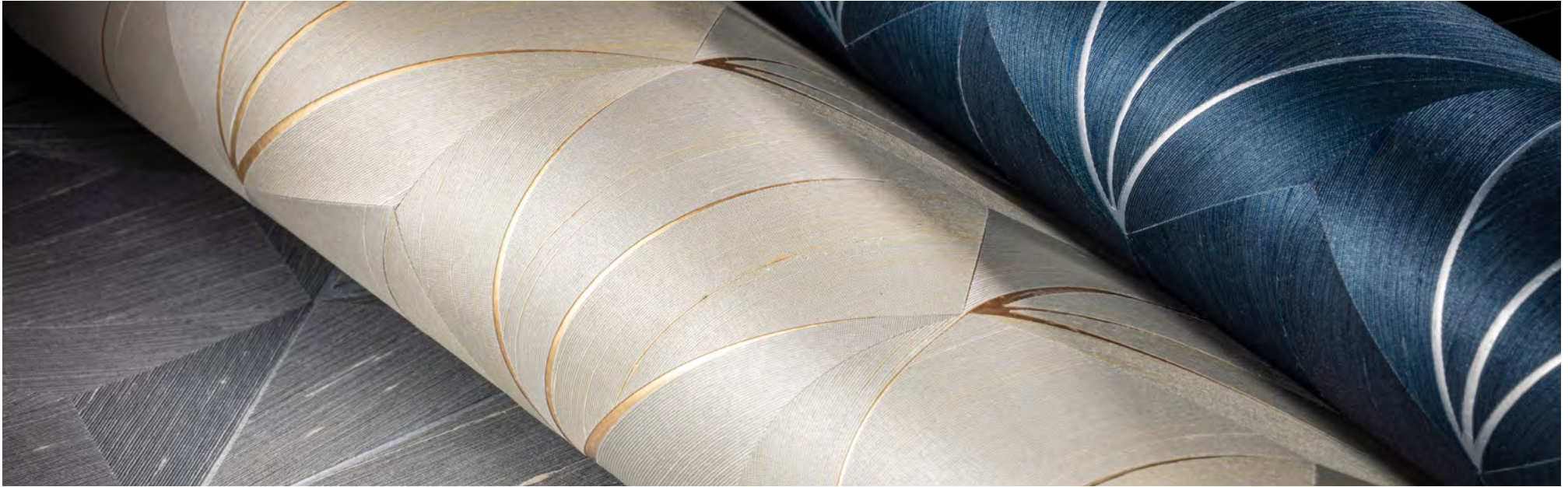
Authentic natural silk triangles form a field of subtle geometry when hand placed against metallic foil backing. An array of color and gentle texture soothe the palette to an elegant shimmer.



Photo: LX1598

HANDCRAFTED

SOLITAIRE



SPECIFICATIONS

WIDTH: 36" (91,4 cm) Trimmed

REPEAT: 10 2/5" (26,4 cm)

BACKING: Non-Woven

FLAME RATING: ASTM E84 Class A

BOLT SIZE: 8 yd (7,32 m)

MATCH: Straight

MINIMUM ORDER: 8 yd (7,32 m)

MAINTENANCE: Soft Dry Brush

8 colorways; \$85.00 per yard / € 82.00 per meter

HANDCRAFTED

SOLITAIRE



LX1595 - Platinum



LX1596 - Oatmeal



LX1597 - Juniper



LX1598 - Pebble



LX1599 - Dove



LX1600 - Anchor



LX1601 - Stone



LX1602 - Twilight

Click on patterns above to download tearsheet.

[DOWNLOAD ASSETS](#)



INSIGNIA

A woven chevron features an intricate emboss across the surface of this deeply textured high-performance vinyl. A metallic accent adds glamorous dimensional effect to its natural inspiration.

INSIGNIA



SPECIFICATIONS

WIDTH: 54" (137,1 cm) Untrimmed
Trims to 52" (132,08 cm)

REPEAT: 1 1/2" (3,81 cm)

BACKING: Osnaburg

FLAME RATING: ASTM E84 Class A

WEIGHT: 24 oz. Type II Vinyl

MATCH: Straight/Non-Reversible

MAINTENANCE: Scrubbable/Washable

8 colorways; \$29.00 per yard / € 28.00 per meter

INSIGNIA



LX1615 - Porcelain



LX1616 - Taupe



LX1617 - Dove



LX1618 - Sandstone



LX1619 - Oatmeal



LX1620 - Driftwood



LX1621 - Anchor



LX1622 - Steel Blue

Click on patterns above to download tearsheet.

[DOWNLOAD ASSETS](#)



CATENA

This small, all-over pattern, inspired by a handwoven textile, acts as a textural backdrop with minimal commitment to pattern. Modern color and touches of metallic add beauty to the durability inherent in high-performance vinyl.

Photo: LX1626

CATENA



SPECIFICATIONS

WIDTH: 54" (137,1 cm) Untrimmed
Trims to 52" (132,08 cm)

REPEAT: Random

BACKING: Osnaburg

FLAME RATING: ASTM E84 Class A

WEIGHT: 20 oz. Type II Vinyl

MATCH: Reversible

MAINTENANCE: Scrubbable/Washable

8 colorways; \$25.00 per yard / € 24.00 per meter

CATENA



LX1625 - Oatmeal



LX1626 - Taupe



LX1627 - Terracotta



LX1628 - Soft Silver



LX1629 - Heather



LX1630 - Anchor



LX1631 - Ash



LX1632 - Steel Blue

Click on patterns above to download tearsheet.

[DOWNLOAD ASSETS](#)



MERIDIAN

The high-performance vinyl's modern abstract pattern is enhanced by the quiet elegance of a classic silk texture. The organic inspired palette offering is as beautiful as it is durable.

MERIDIAN



SPECIFICATIONS

WIDTH: 55 1/2" (140,9 cm) Untrimmed
Trims to 54" (137,1 cm)

REPEAT: Random

BACKING: Non-Woven

FLAME RATING: ASTM E84 Class A

WEIGHT: 20 oz. Type II Vinyl

MATCH: Non-Reversible

MAINTENANCE: Scrubbable/Washable

10 colorways; \$25.00 per yard / € 24.00 per meter

MERIDIAN



LX1585 - Platinum



LX1586 - Ash



LX1587 - Fog



LX1588 - Anchor



LX1589 - Porcelain



LX1590 - Oatmeal



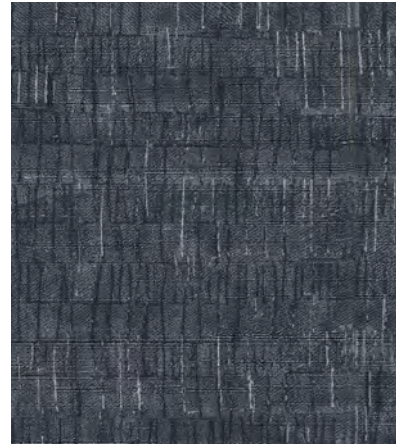
LX1591 - Glacier



LX1592 - Dove



LX1593 - Stone



LX1594 - Twilight

Click on patterns above to download tearsheet.

[DOWNLOAD ASSETS](#)

RAFFIA WEAVE

The pliant raffia palm's lush natural leaves weave bold texture from the original organic form. It is offered in a palette of exceptional burnished metallic finishes to provide a play of light and shadow.

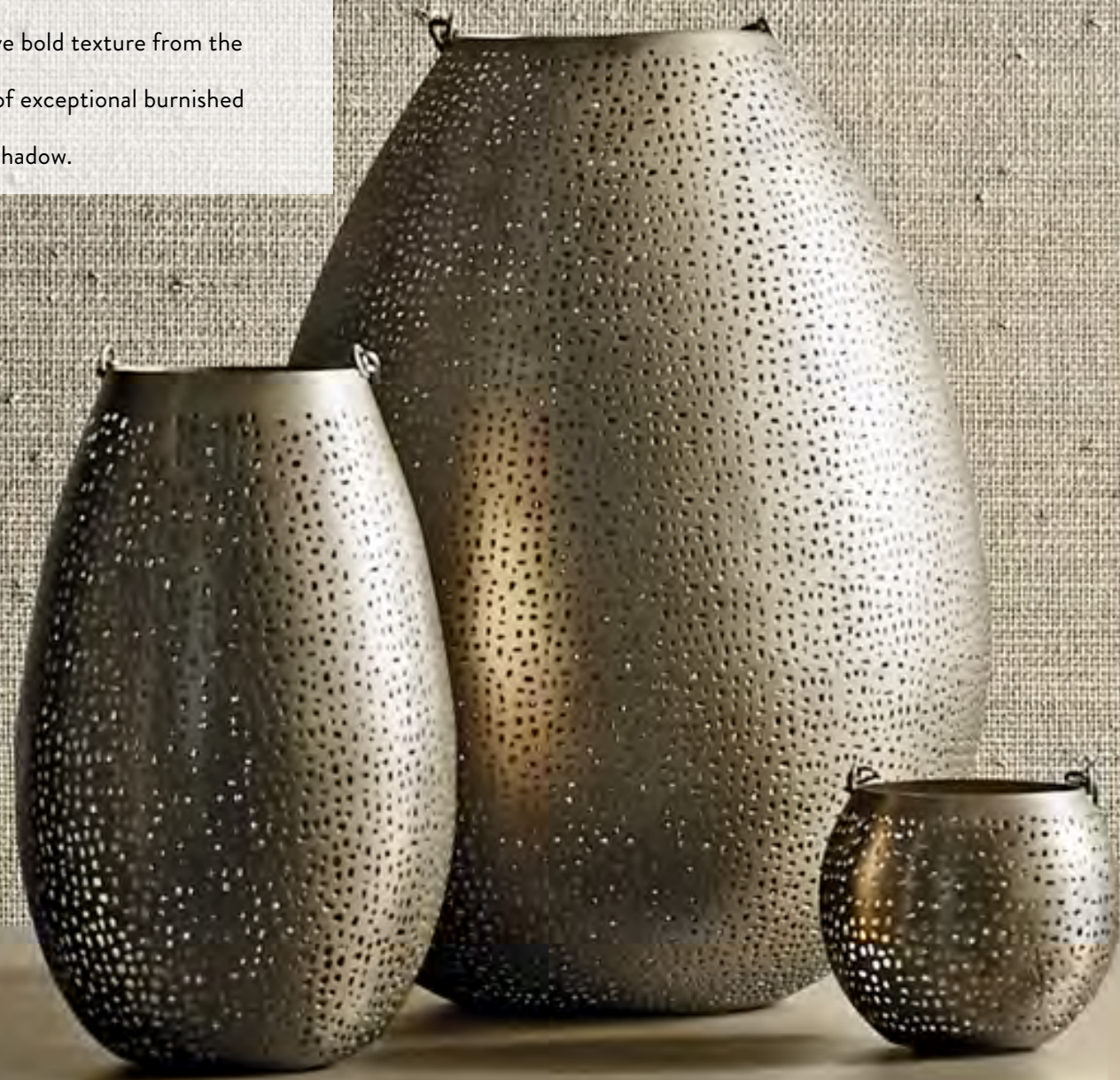


Photo: LX1566

RAFFIA WEAVE



SPECIFICATIONS

WIDTH: 36" (91,4 cm) Trimmed

REPEAT: None

BACKING: Non-Woven

FLAME RATING: ASTM E84 Class A

BOLT SIZE: 8 yd (7,32 m)

MATCH: Random

MINIMUM ORDER: 8 yd (7,32 m)

MAINTENANCE: Soft Dry Brush

8 colorways; \$55.00 per yard / € 53.00 per meter

RAFFIA WEAVE



LX1565 - Soft Silver



LX1566 - Dove



LX1567 - Onyx



LX1568 - Twilight



LX1569 - Platinum



LX1570 - Oatmeal



LX1571 - Champagne



LX1572 - Rosewood

Click on patterns above to download tearsheet.

[DOWNLOAD ASSETS](#)

PALMYRA

Slender fronds of the raffia palm are hand woven to create this organic grasscloth. Hand embellished with a subtle metallic finish, this natural material is curated in a range of signature colors.



Photo: LX1607

PALMYRA



SPECIFICATIONS

WIDTH: 36" (91,4 cm) Trimmed

REPEAT: None

BACKING: Non-Woven

FLAME RATING: ASTM E84 Class A

BOLT SIZE: 8 yd (7,32 m)

MATCH: Random

MINIMUM ORDER: 8 yd (7,32 m)

MAINTENANCE: Soft Dry Brush

10 colorways; \$38.00 per yard / € 37.00 per meter

PALMYRA



LX1605 - Porcelain



LX1606 - Pebble



LX1607 - Wicker



LX1608 - Stone



LX1609 - Oatmeal



LX1610 - Taupe



LX1611 - Dove



LX1612 - Terracotta



LX1613 - Anchor



LX1614 - Steel Blue

Click on patterns above to download tearsheet.

DOWNLOAD ASSETS

STAY UP TO DATE



carlisleco.com



[@carlisle.and.co](https://www.instagram.com/carlisle.and.co)