



ANNA FRENCH

Nara



Kyoto wall covering
Saybrook Chair in Shadows
Pillow in Akio
Sheers in Upstream Sheer

Inspired by Japanese design ethos and culture, the Nara collections are a modern interpretation of the natural world around us. An ethereal aesthetic emanates from the antique documents which inspire many of the designs. Patterns are influenced by Japanese architecture, woodcuts and watercolor techniques, and feature traditional motifs taken from kimonos and other enchanting artistry.

Nara Patterns



KIMONO

Literally meaning "the thing to wear," the kimono is known as a symbol of traditional Japanese culture. Japan has a very rich textile history, with the kimono being a major focus of interest and artistic expression. This geometric pattern was taken from an archival garment from the 1800s.

Wallcovering—5 colorways

Embossed, Non-woven Type I Vinyl
Match: Straight
Vertical Repeat: 12½" (32 cm)
Width: 27½" (70 cm)
Made in Italy

Printed Fabric—5 colorways

Content: 100% Linen
Vertical Repeat: 12½" (32 cm)
Horizontal Repeat: 6¾" (17 cm)
Width: 54" (137 cm)
Made in Italy



PUCCINI

This large-scale pattern has a modern, retro vibe evocative of the 1960s. Think impressionist butterfly wings!

Wallcovering—5 colorways

Print Type: Screen Print
Match: Half Drop
Vertical Repeat: 36" (91 cm)
Width: 27" (69 cm)
Made in USA

Printed Fabric—5 colorways

Content: 100% Linen
Vertical Repeat: 37" (94 cm)
Horizontal Repeat: 54" (137 cm),
Half Drop Match
Width: 54" (137 cm)
Made in Italy



KYOTO

Kyoto was once the capital of Japan. It is a city on the island of Honshu with sublime gardens and scenery. This large-scale pattern features a loose interpretation of nature styled with a watercolor technique dating back to the 1400s. There are more elements and trees featured in the fabric; the pattern has been enlarged and expands the 54" width.

Wallcovering—6 colorways

Print Type: Gravure
Match: Half Drop
Vertical Repeat: 36" (91 cm)
Width: 27" (69 cm)
Made in USA

Printed Fabric—6 colorways

Content: 100% Cotton
Vertical Repeat: 45¼" (115 cm)
Horizontal Repeat: 54" (137 cm)
Width: 54" (137 cm)
Made in Italy



Kimono wallcovering
Draperies in Kimono
Pillows in Japonic Stripe, Reed Stripe, Puccini and Akio
Addison Daybed in Freeport from Festival

Aerial Garden wallcovering



Puccini wallcovering
Draperies in Puccini
Greenwich Chair in Reed Stripe

Nara Patterns



SHADOWS

A simple, modern brush-stroke pattern with a graceful appearance.

Wallcovering—6 colorways

Print Type: Gravure

Match: Half Drop

Vertical Repeat: 27" (69 cm)

Width: 27" (69 cm)

Made in USA

Printed Fabric—6 colorways

Content: 60% Linen, 30% Cotton,
10% Nylon

Vertical Repeat: 28½" (72 cm)

Horizontal Repeat: 54" (137 cm)

Width: 54" (137 cm)

Made in UK



TREE HOUSE

Taken from a document from the 1920s, Tree House is full of Asian influence and Japanese motifs. The pattern features a whimsically styled fantasy of flora, trees and birds.

Wallcovering—5 colorways

Print Type: Screen Print

Match: Half Drop

Vertical Repeat: 36" (91 cm)

Width: 27" (69 cm)

Made in USA

Printed Fabric—5 colorways

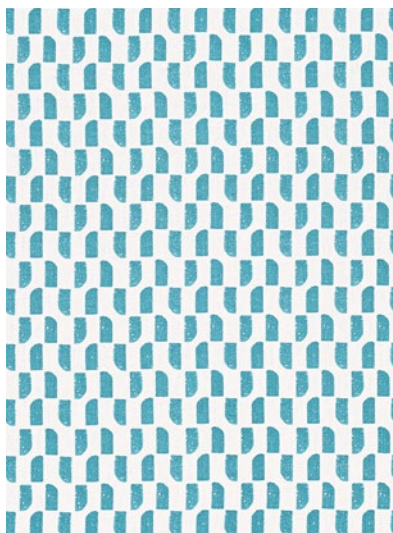
Content: 100% Cotton

Vertical Repeat: 34¾" (88 cm)

Horizontal Repeat: 54" (137 cm)

Width: 54" (137 cm)

Made in UK



AKIO

Akio is a small-scale block print of organic geometric shapes. The pattern is printed on 100% linen.

Printed Fabric—7 colorways

Content: 100% Linen

Vertical Repeat: 8½" (21 cm)

Horizontal Repeat: 3" (8 cm)

Width: 52" (132 cm)

Made in India



Tree House wallcovering
Lauderdale Chairs in Kimono, Shadows & Akio



Nara Patterns



JAPONIC STRIPE

A rhythmic pattern that is primitive and simplistic in style. The fabric is woven to create the vertical stripe and then the design is block printed on top.

Woven Fabric—6 colorways

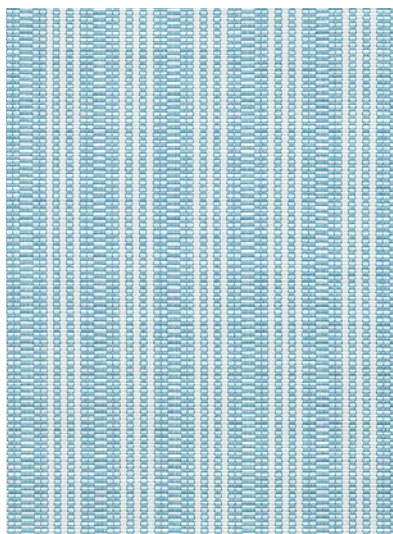
Content: 100% Linen

Vertical Repeat: 2" (5 cm)

Horizontal Repeat: 8¾" (22 cm)

Width: 54" (137 cm)

Made in India



REED STRIPE

Reed Stripe is a heavy weight fabric made with an ottoman weave that has pronounced woven ribs. This 100% cotton fabric is soft, substantial and versatile and works well with other patterns in the collection.

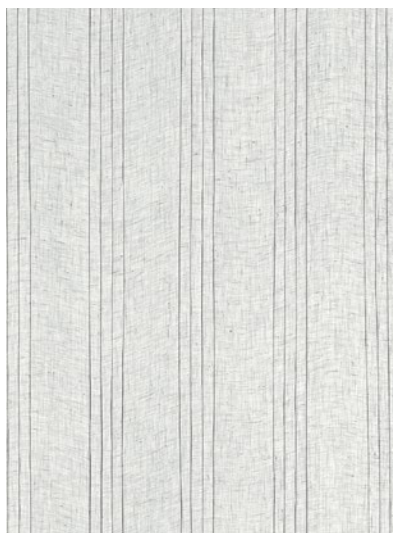
Woven Fabric—6 colorways

Content: 100% Cotton,

Horizontal Repeat: 2¼" (6 cm)

Width: 54" (137 cm)

Made in India



UPSTREAM SHEER

A 100% linen sheer with delicate pintucks for a tailored look.

Woven Fabric—1 colorway

Content: 100% Linen

Horizontal Repeat: 5" (13 cm)

Width: 49" (124 cm)

Made in India

ANNA FRENCH



Japonic Stripe fabric



Nara Patterns



KYOTO LEAVES

This pattern features the bamboo leaf elements taken from the Kyoto pattern, enlarged and scattered to create a full-foliage design using the same watercolor technique.

Wallcovering—6 colorways

Print Type: Gravure

Match: Half Drop

Vertical Repeat: 25¼" (64 cm)

Width: 27" (69 cm)

Made in USA



CHARLOTTE RAFFIA

An unusual geometric shape taken from a Japanese shoji screen panel. The pattern is printed on top of the raffia.

Raffia—7 colorways

Print Type: Gravure on Raffia

Match: Straight

Vertical Repeat: 5" (13 cm)

Width: 36" (91 cm)

Made in South Korea



RAMIE WEAVE

Simulating a natural grasscloth, this wallcovering has a handcrafted look made functional on heavy-duty Type II vinyl. The variegated tones and subtle irregularities are enhanced with the woven embossed texture.

Wallcovering—8 colorways

Embossed, Non-woven Type II Vinyl

Match: Straight

Vertical Repeat: 21" (53 cm)

Width: 27" (69 cm)

Made in USA

ANNA FRENCH

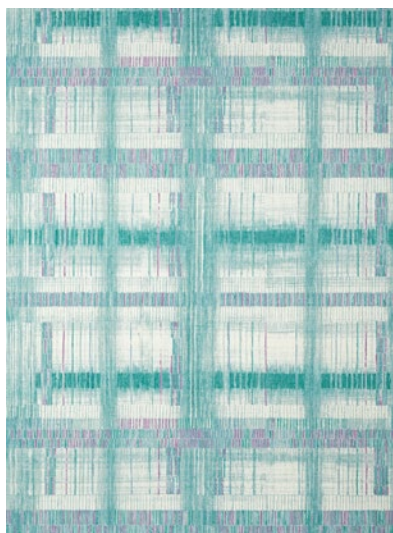


Kyoto Leaves wallcovering
Draperies in Kyoto
Roman Shade in Shadows
Pillows in Japonic Stripe, Akio & Tree House
Carson Chair in Bristol from Landmark Textures



Ramie Weave wallcovering

Nara Patterns



TAKAO WEAVE

Mount Takao is a mountain about an hour outside of Tokyo; a popular tourist destination thanks to the breathtaking beauty of its nature in a heavily-populated metropolitan area. This plaid interpretation is digitally printed on top of the natural paperweave

Paperweave—5 colorways

Print Type: Digital Print on Paperweave

Match: Straight

Vertical Repeat: 20½" (52 cm)

Width: 36" (91 cm)

Made in South Korea



WAVES

Waves is a pattern full of movement, featuring alternately overlapping crests. The motif is both traditional and typical of Japanese geometric patterns. The popular wave crest is symbolic of power and resilience and represents surges of good luck.

Wallcovering—6 colorways

Print Type: Screen Print

Match: Half Drop

Vertical Repeat: 12¾" (32 cm)

Width: 27" (69 cm)

Made in USA





A N N A F R E N C H

Anna French is a division of THIBAUT